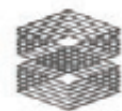


SCAPE LANDSCAPE ARCHITECTURE DPC

CHINA BASIN PARK & MISSION ROCK PASEOS

SCHEMATIC DESIGN APPLICATION

OCTOBER 23, 2019

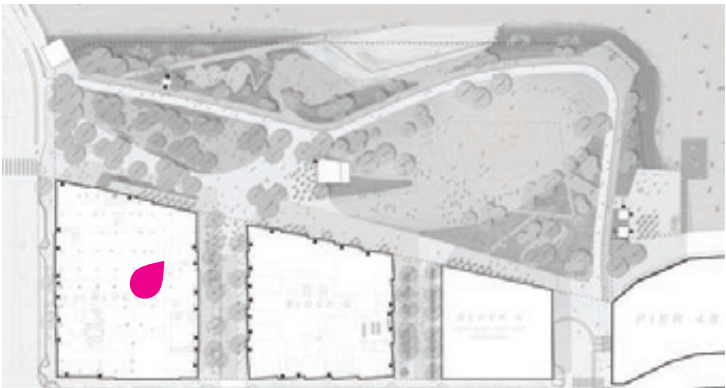


TISHMAN SPEYER

SCAPE CMG

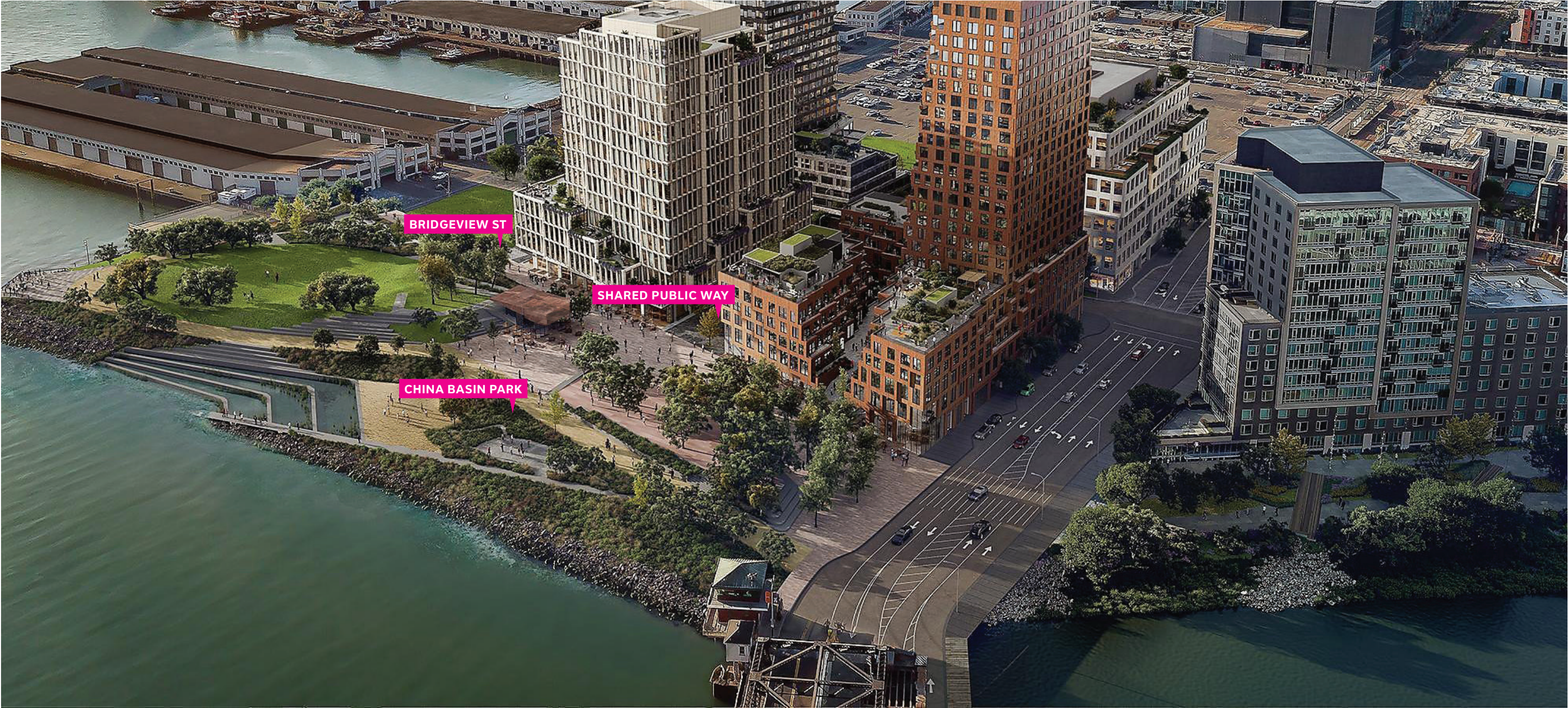
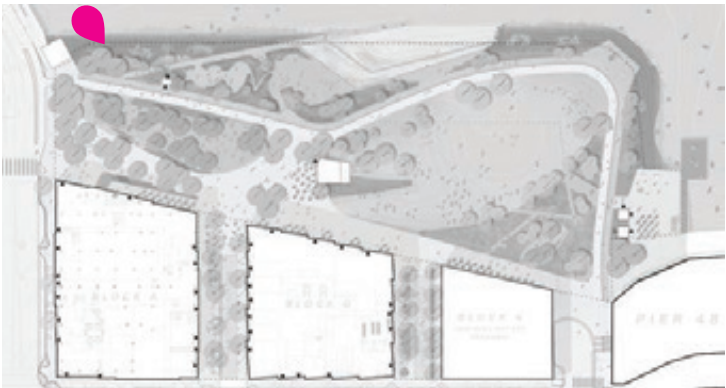
DESIGN

OVERVIEW



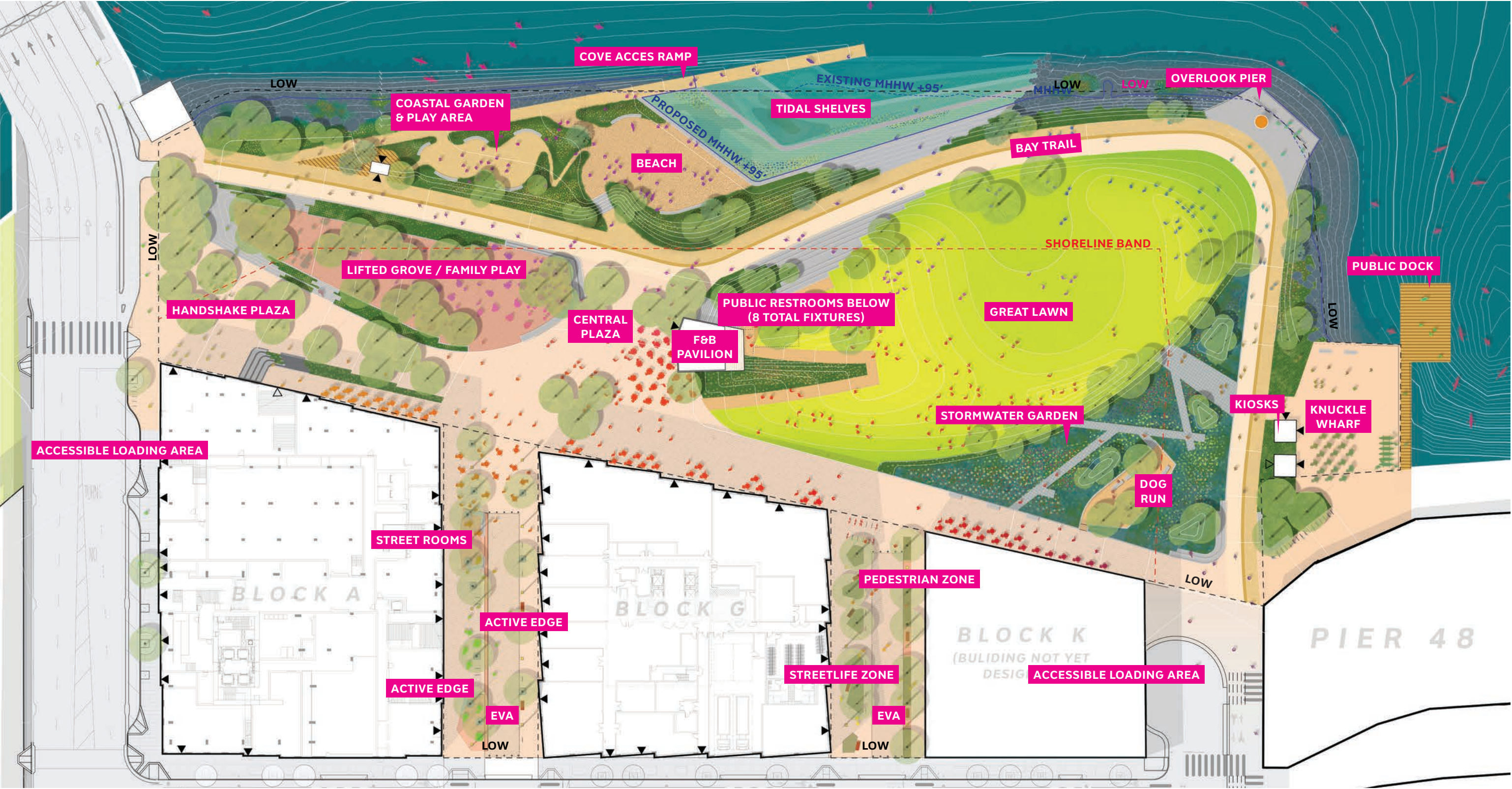
DESIGN

OVERVIEW



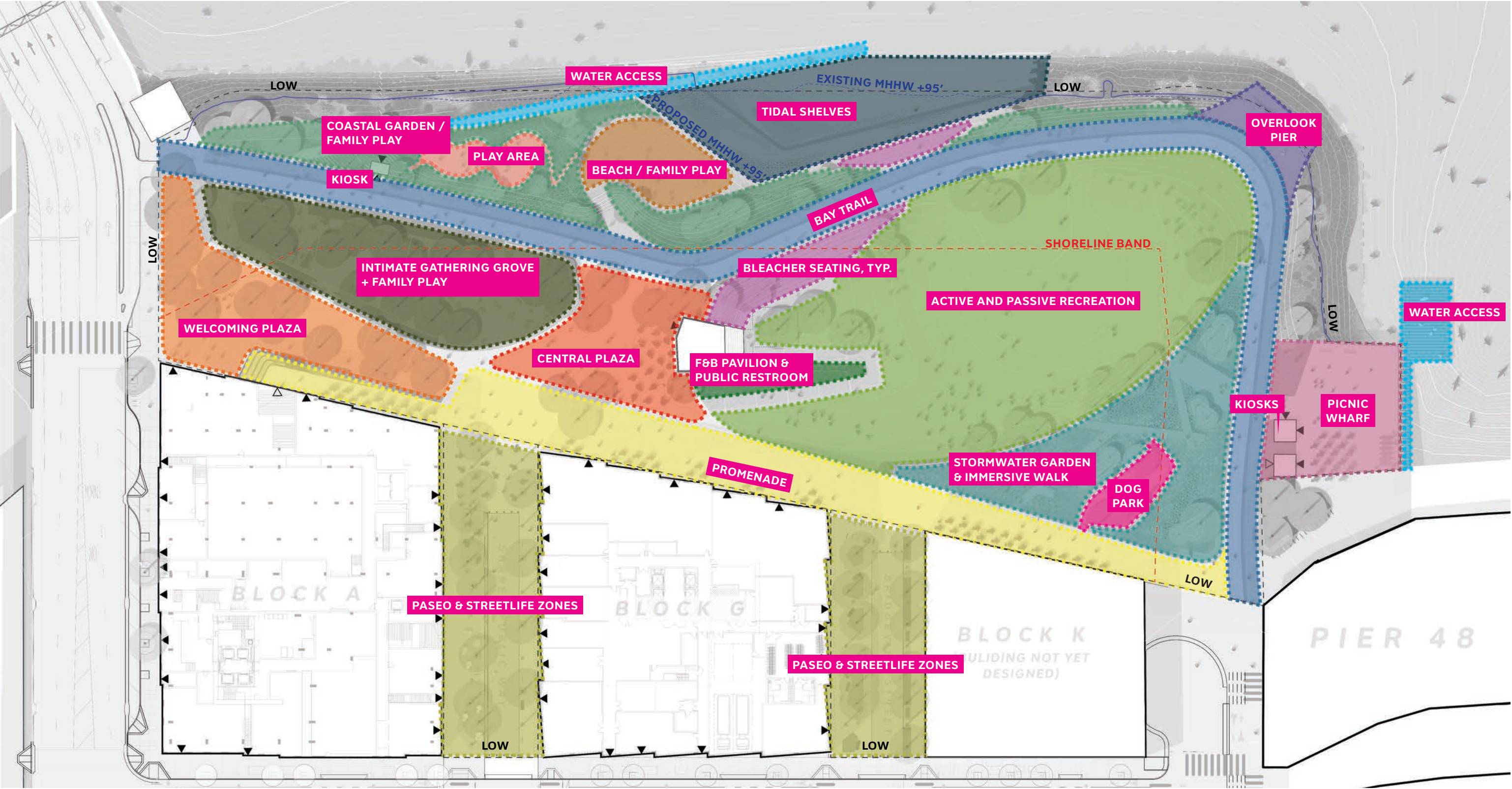
DESIGN

PLAN



DESIGN

PROGRAMMING

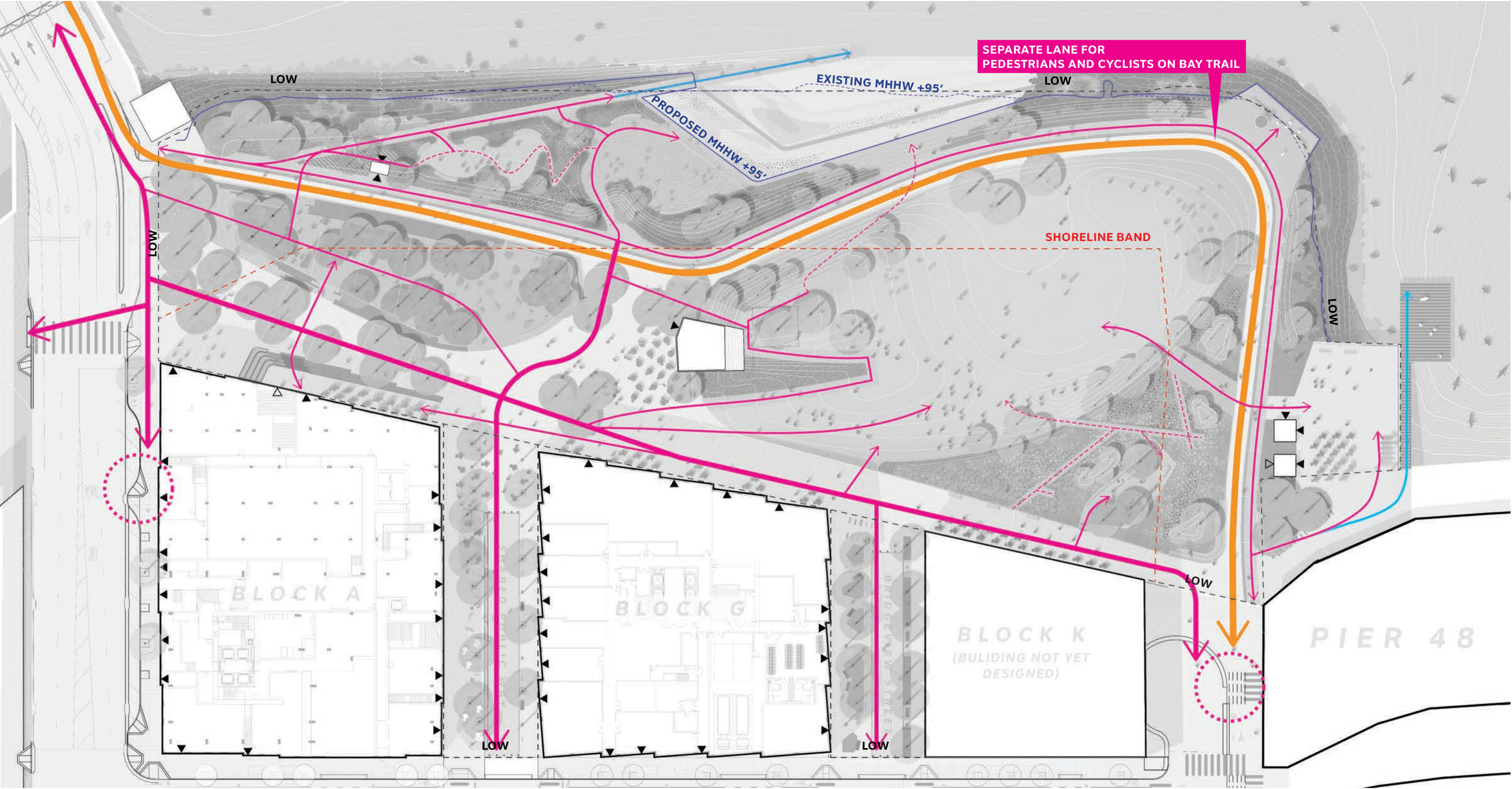


DESIGN

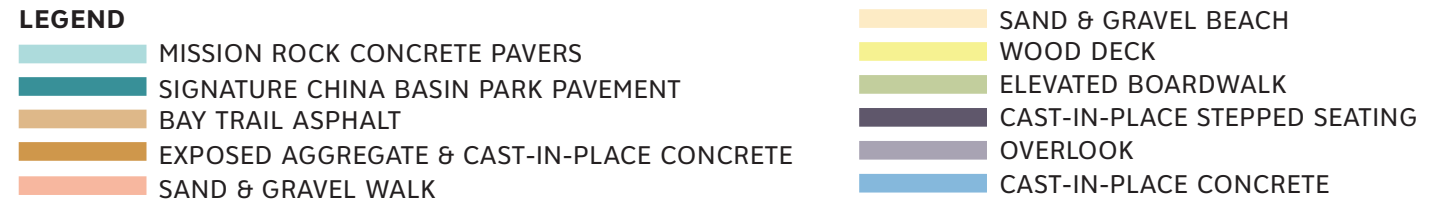
CIRCULATION

LEGEND

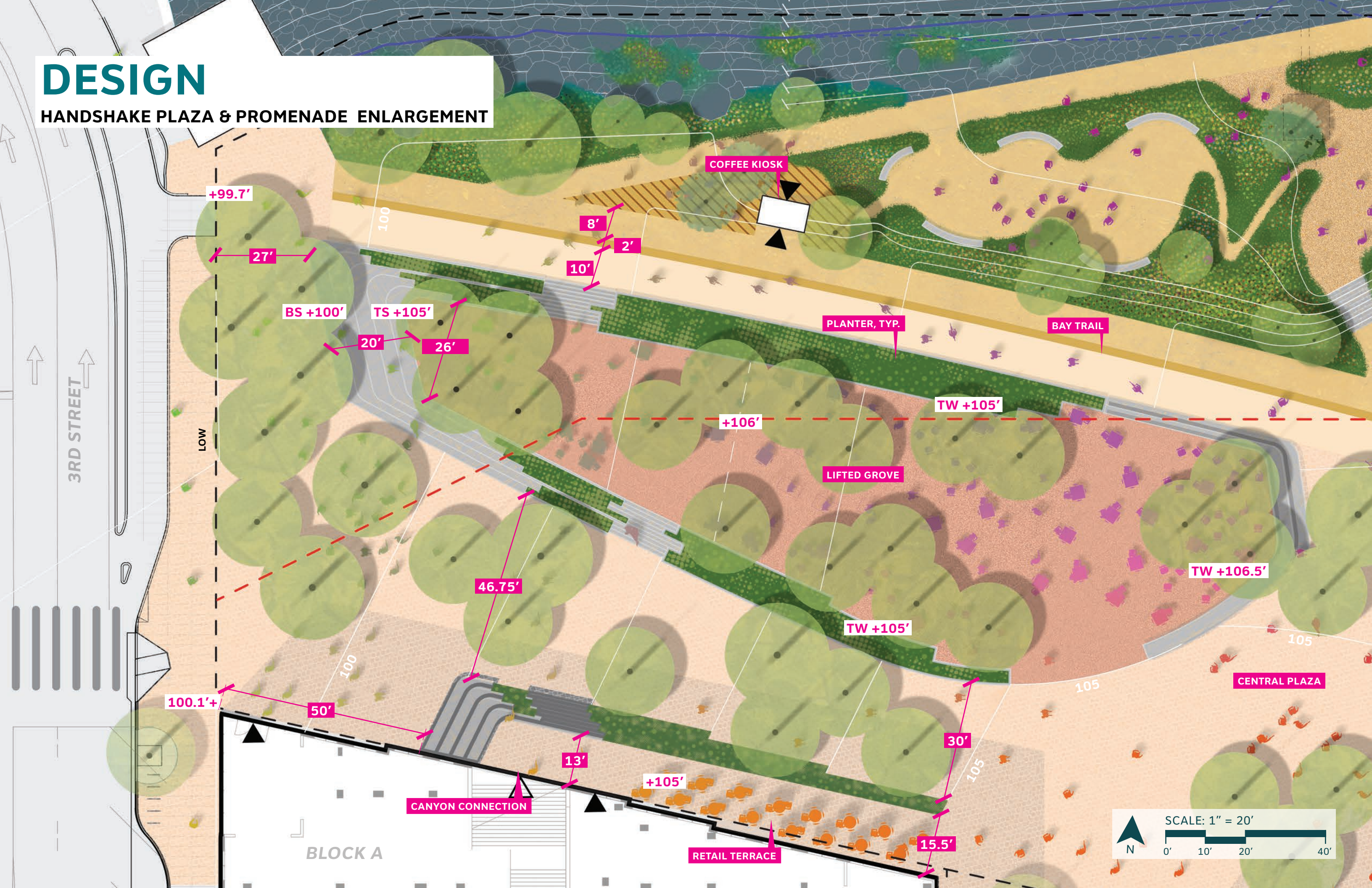
- BAY TRAIL
- PRIMARY CIRCULATION
- SECONDARY CIRCULATION
- IMMERSIVE PATH
- WATER ACCESS
- ACCESSIBLE LOADING ZONE
- BUILDING ENTRANCE



SITE MATERIALS

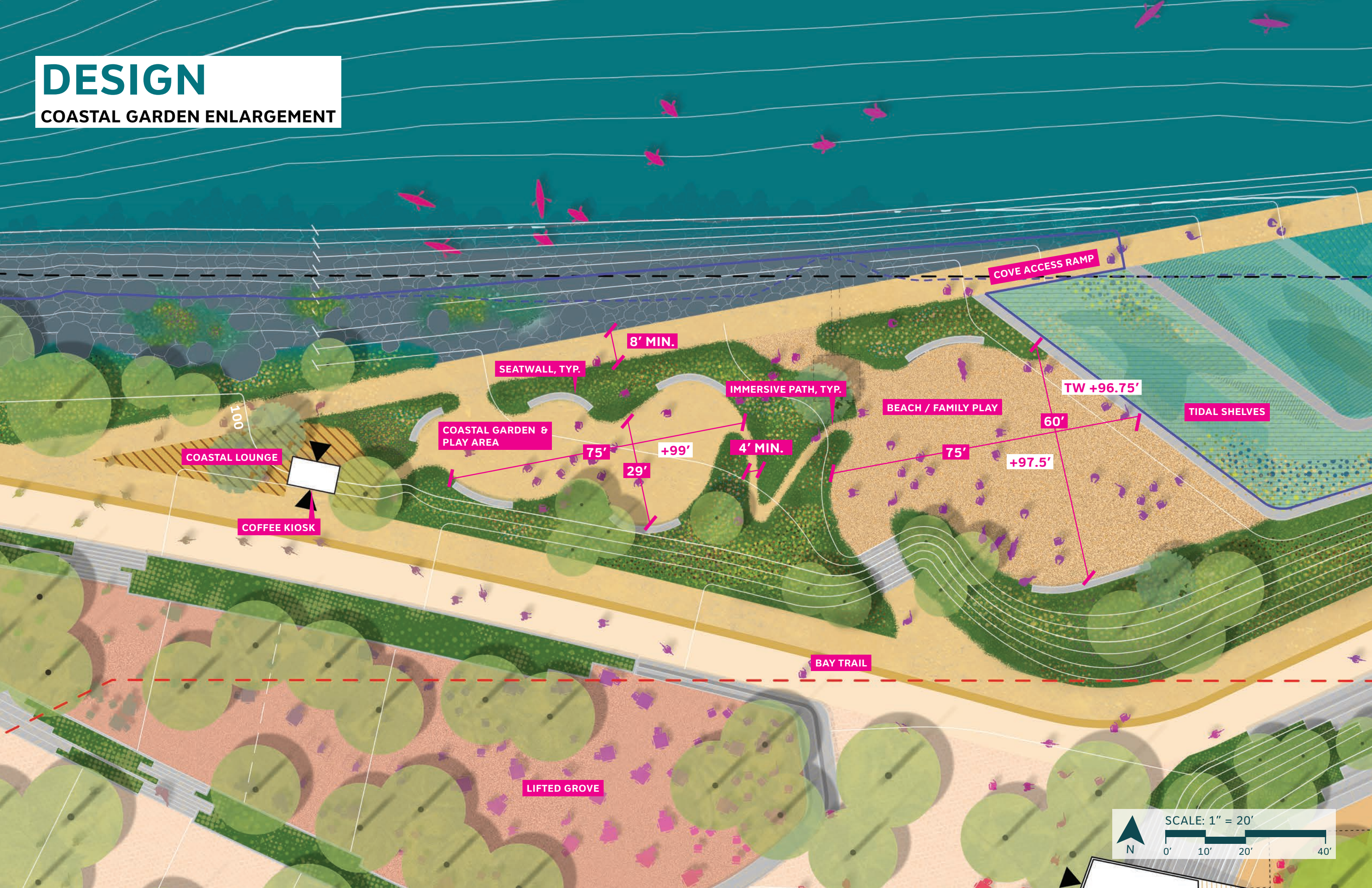


HANDSHAKE PLAZA & PROMENADE ENLARGEMENT



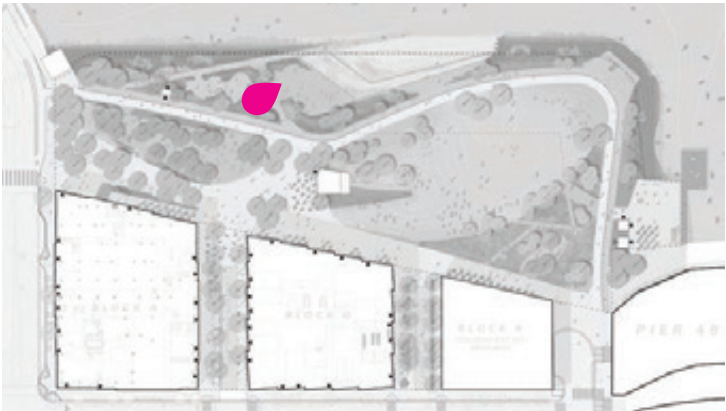
DESIGN

COASTAL GARDEN ENLARGEMENT



DESIGN

COASTAL GARDEN RENDERING



KEY PLAN



DESIGN

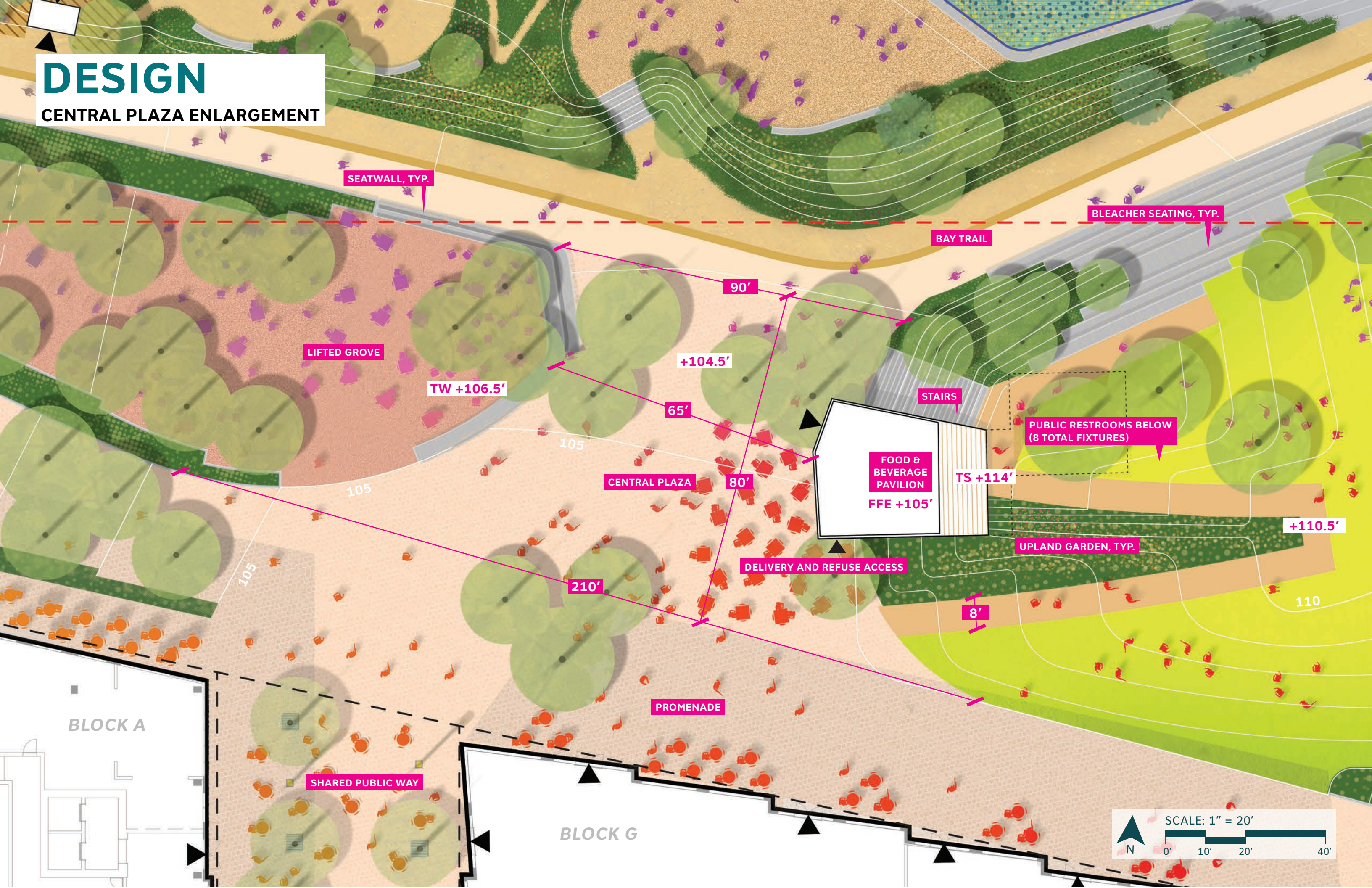
TIDAL SHELVES RENDERING



KEY PLAN



CENTRAL PLAZA ENLARGEMENT



DESIGN

CENTRAL PLAZA RENDERING



KEY PLAN



DESIGN

GREAT LAWN RENDERING



KEY PLAN

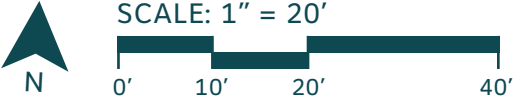
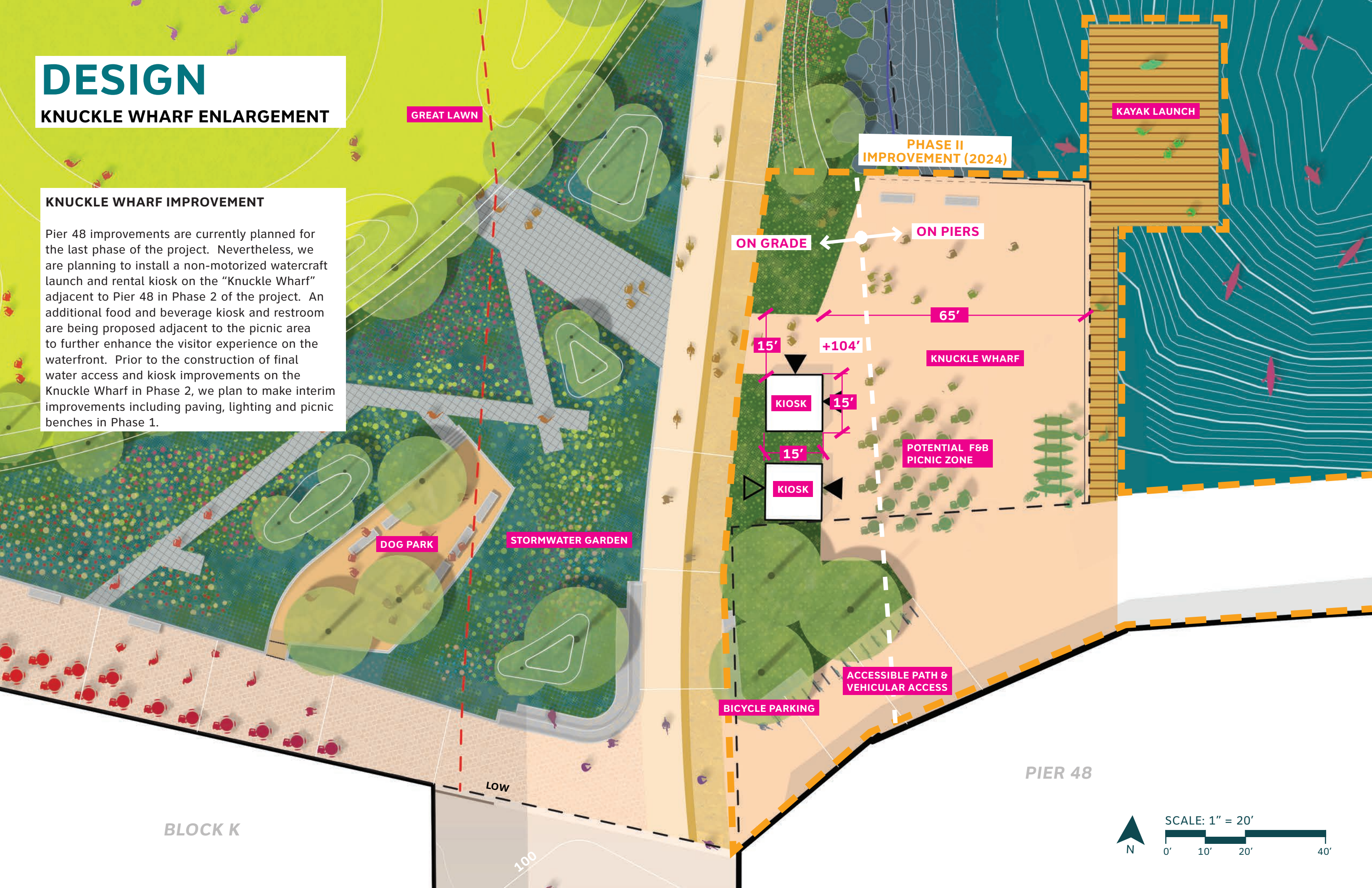


DESIGN

KNUCKLE WHARF ENLARGEMENT

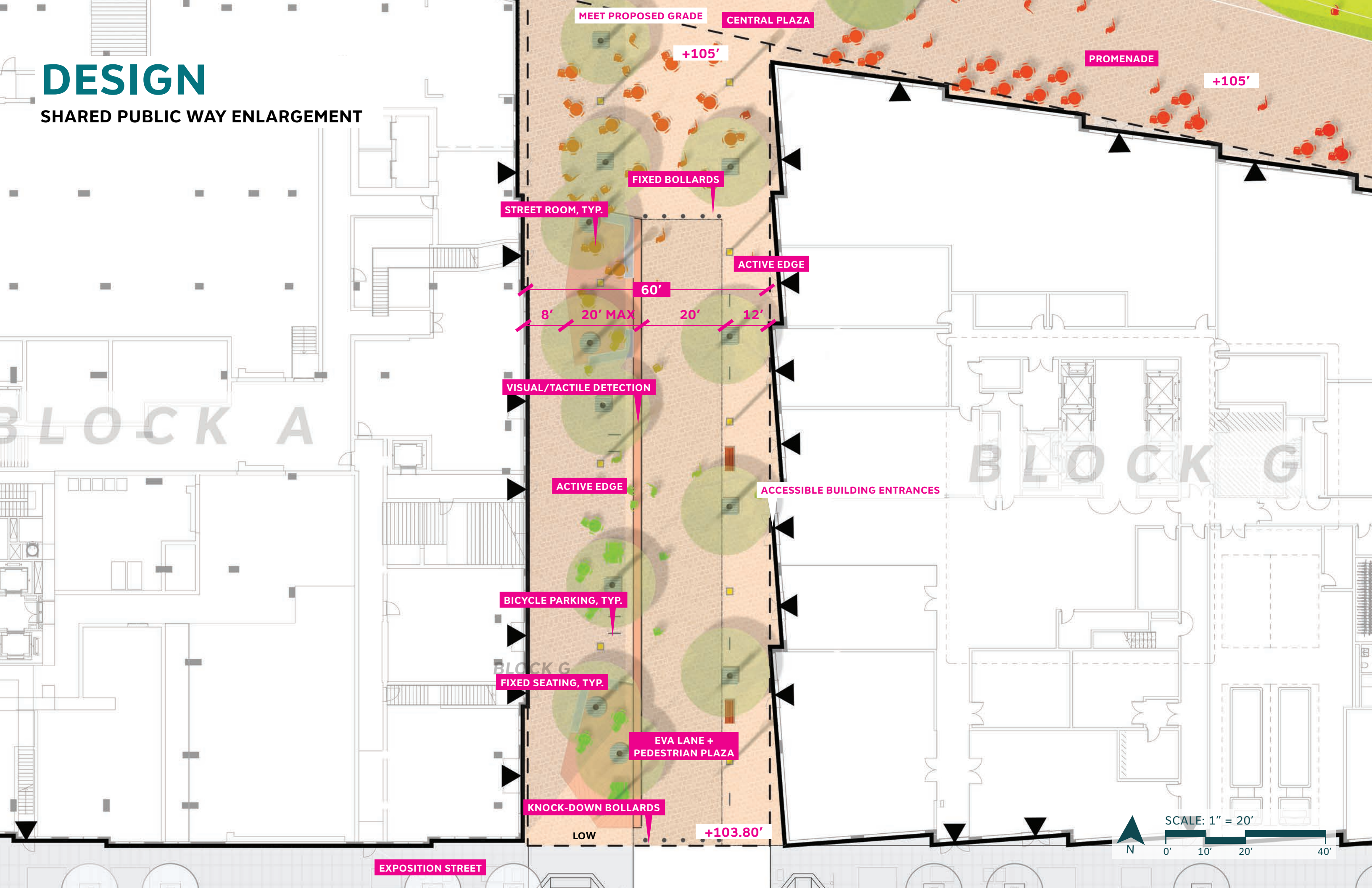
KNUCKLE WHARF IMPROVEMENT

Pier 48 improvements are currently planned for the last phase of the project. Nevertheless, we are planning to install a non-motorized watercraft launch and rental kiosk on the “Knuckle Wharf” adjacent to Pier 48 in Phase 2 of the project. An additional food and beverage kiosk and restroom are being proposed adjacent to the picnic area to further enhance the visitor experience on the waterfront. Prior to the construction of final water access and kiosk improvements on the Knuckle Wharf in Phase 2, we plan to make interim improvements including paving, lighting and picnic benches in Phase 1.



DESIGN

SHARED PUBLIC WAY ENLARGEMENT



DESIGN

BRIDGEVIEW STREET ENLARGEMENT

