

An aerial photograph of an industrial waterfront area. In the center, a tall, narrow concrete building is covered in a vibrant, multi-colored mural featuring geometric patterns and abstract shapes in red, blue, yellow, and green. To the left, a large white ship is docked at a pier. In the background, a large body of water is visible with several ships and a distant shoreline. To the right, there are other industrial buildings and structures, including a large white building with a corrugated metal roof and a tall, thin tower. The sky is clear and blue.

Islais Creek/Bayview Community Meeting Series #4

Summary

May 2021



COMMUNITY MEETING #4 OVERVIEW

In May 2021, the Port of San Francisco and City partners hosted a series of online meetings to share updates on the Islais Creek Southeast Mobility Adaptation Strategy (ICSMAS).

ICSMAS represents a two-year inter-agency community planning process led by SF Planning, with the Port, SFMTA, and SFPUC. It is the City's first effort to examine combined impacts from coastal and inland (precipitation based) flooding and sea level rise. The work to understand these combined flood risks and develop near- and long-term strategies through 2080 was funded by a Caltrans grant, with a final report due in June 2021.

The May 2021 online meetings focused on reconnecting with and reporting back to the community members who had been part of previous ICSMAS engagement, including three in-person workshops, holiday mixers, and a walking tour.

Content and setup for the meetings focused on providing a recap of key ICSMAS finding and creating an opportunity for comments on the shared adaptation strategy prior to submitting the final report.

COMMUNITY MEETING #4 OVERVIEW

In support of public health efforts to slow the spread of COVID-19, the meetings were held virtually featuring the same presentation material and feedback questions.

These meetings included:

- **A Co-hosted Meeting:** These are typically co-hosted with a Community-Based Organization. The event is approximately one 1 hour, including time for a presentation with opportunities for feedback through polls, discussion questions, and other engagement activities woven throughout.
- **2 "Circle Back" Events:** This one-hour online meeting included an overview presentation with facilitated breakout rooms for discussion.

In additional, informational presentations were shared with the Port Commission and Southern Waterfront Advisory Committee.

COMMUNITY MEETING #4 OVERVIEW

Summary of Meetings Conducted

MEETING	DATE/TIME	TYPE
SF Public Housing Tenants Association	Thursday, May 6, 2021, 6:00 PM	Co-hosted Meeting
ICSMAS Community Circle Back	Tuesday, May 18, 2021, 12:00 PM	Circle-Back
ICSMAS Community Circle Back	Wednesday, May 19, 2021, 6:00 PM	Circle-Back
Port Commission	Tuesday, May 25, 2021, 3:15 PM	Update
Southern Waterfront Advisory Committee	Wednesday, May 26, 2021 6:00 PM	Informational Presentation

COMMUNITY MEETING #4 OVERVIEW

Agenda



- Share Waterfront Resilience Program (WRP) updates and recap earlier community feedback
- Provide updates on ICSMAS and preview the adaptation strategies developed
- Confirm key priorities from community and stakeholder engagement as it relates to ICSMAS
- Provide information on future engagement opportunities

MEETING ATTENDANCE

Combined for the co-hosted meeting and 2 "Circle Backs," approximately 41 people logged in



OVERVIEW: WHAT WE HEARD

We heard the following general comments and feedback from the community meetings:

- Several attendees wanted to know how the project related to the work being done with San Francisco Public Utilities Commission (SFPUC) Sewer Improvement Project. Community wanted to know what the SFPUC is doing to prepare for high-water levels.
- Attendees had a question as to how much the development going on in the Southeast is contributing to the financial support of the WRP
- Several attendees shared that they would participate in outdoor events, granted that there is enough space. They also suggested a walking tour to see these locations in-person.
- Community members commented on the look and feel of 3rd St, noting the abrupt change from newer infrastructure concrete benches and a “colder” look. They were requesting this aesthetic be updated with more green aspects and natural materials

WHAT WE HEARD

- Attendees expressed gratitude for including them in this discussion and update. They also shared that some of them sit on different Boards and it's good to hear the presentations more than once to help engrain the information.
- Attendees shared concerns around current limitations/unreliability of public transit options; continue to think about how to bring more public transit east of 3rd Street.
- Asked if ecological enhancements indicated for the Backlands would include open public space.
- Community shared their concerns around hardscape adaptation strategies, such as the potential costs and disruption for maintenance and possible replacements, potential need for further elevation to protect against sea level rise, and aesthetics of proposed materials. Community expressed a preference for ecological adaptation strategies for the shoreline.

WHAT WE HEARD

- Community expressed the need for pedestrian/bicycle pathways that are separate from cargo/industrial thruways. There was a preference to keep Cargo Way for industrial traffic and find other opportunities for bike and pedestrian routes (e.g. Evans Ave). Concerns were raised around public health, public safety, and air quality impacts from exhaust from cargo.
- Community requested future land development take into consideration what the future land use could be – over what it is now – and to consider how best to celebrate and increase public access to the waterfront.
- Concern that adaptation strategies don't immediately address diversity, racial equity, systemic racism, and gentrification.
- Community recognized funding constraints as a result of the pandemic and expressed concerns that Islais Creek and marginalized communities won't be prioritized in budgeting decisions.

Engagement Question #1

What questions do you have about the Waterfront Resilience Program?

WE WANT TO HEAR FROM YOU!

Let's Pause for Questions



- What questions do you have about the Waterfront Resilience Program?

SF Public Housing Tenants Association Comments

- What is the Port doing to finance or develop financing at this time?
- Is any of the development going on around Islais Creek at this point contributing to this?
- Don't want to miss the opportunity like in Mission Rock. We are looking at that now as how we are going to save Mission Creek and had a good opportunity with Mission Bay.

Engagement Question #2

Do you have any other concerns about flood protection that aren't addressed?

WE WANT TO HEAR FROM YOU!

Flood Concerns



- Do you have any other concerns about flood protection that aren't addressed?

SF Public Housing Tenants Association Comments

- What is the timing of these improvements?

Engagement Question #3

What potential community benefits or amenities feel most exciting to you?
What did we miss?

WE WANT TO HEAR FROM YOU!

Community Benefits



- What potential community benefits or amenities feel most exciting to you?
- What did we miss?

SF Public Housing Tenants Association Comments

- Would like to see a seamless look as you travel down 3rd St, seems like there is an abrupt change of different amenities
- Would like to see more greenery and natural materials on 3rd St and less concrete
- More open spaces
- Where are there going to be rain gardens and green gardens?

Engagement Question #4

As the City reopens, what would be the best way to keep you informed and engaged about our next steps?

WE WANT TO HEAR FROM YOU!

Staying Engaged



- As the City reopens, what would be the best way to keep you informed and engaged about our next steps?



San Francisco
Planning

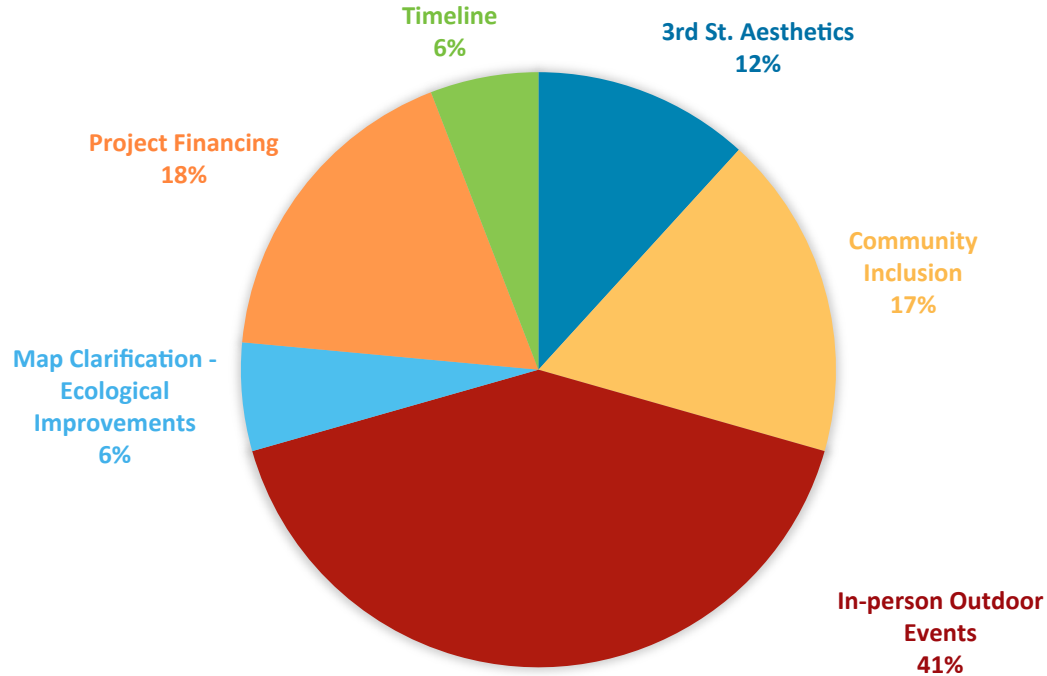
37

SF Public Housing Tenants Association Comments

- Open to going to outdoor events in person and in large open spaced areas
- Open to going on a walking tour in the summer
- We want youth's perspective and young parents and people that are working on the ground, grass roots

SF Public Housing Tenants Association – Feedback Overview

Type: Co-hosted Meeting | Thursday, May 6, 2021



Graph 1 - Pie chart categorizing the questions and comments from this meeting

SF Public Housing Tenants Association – Specific Feedback Overview

Type: Co-hosted Meeting | Thursday, May 6, 2021

TYPE	CATEGORY	COMMUNITY FEEDBACK
Question	Project Financing	With this adaptation plan, what are you doing to finance or develop financing for any remedy at this time? Is any of the development going on around Islais Creek at this point contributing to this?
Comment	Project Financing	Don't want to miss the opportunity like at Mission Creek and Mission Bay (possibly Mission Rock). We are looking at that now as how we are going to save Mission Creek and had a good opportunity with Mission Bay
Comment	3rd St. Aesthetics	I'm here in Bayview, near 3rd and Palou, and I can see that beautiful color structure from my window. I was looking at the new structures and how the feel of 3rd street looks and the different amenities as we travel down and wanted to continue to flow and not be an abrupt change as we continue to go down 3rd, for a seamless look as we travel down 3rd
Question	3rd St. Aesthetics	I would concur with that, with the concrete benches we have can we make it more green, natural material? If we were having a more outdoor space, I see the concrete benches with the last picture that you showed it does seem a little cold, if we could incorporate more natural materials with a little bit more greenery and less concrete, I think that would help with the open spaces
Question	Map Clarification - Ecological Improvements	I see some green on the map, is that where there are green gardens and rain gardens?
Question	Timeline	What is the timing of these improvements?

SF Public Housing Tenants Association – Specific Feedback Overview

Type: Co-hosted Meeting | Thursday, May 6, 2021

TYPE	CATEGORY	COMMUNITY FEEDBACK
Comment	Project Financing	Concerned with SSIP, multi-billion-dollar project, with ejectors towards Islais creek and the flooding is encircling the treatment, wondering what the timing of tying in this greenway with this project, how to save the city money, coming out of this pandemic, everyone is broke, we know this has to be done, if we time it right we can get it done cheaper? Looking at warm water cove, that can be tied to pier 70 revitalization that we can really connect the blue-greenway that can happen now and not 20 years from now
Comment	In-person Outdoor Events	As long as it's outside events, I'm open to going to events in person
Comment	In-person Outdoor Events	Come out of my cocoon every once in a while, but try to stay low, (thank you, sometime people over look us, thank you for including us Channing and Neola, Andrea Baker, Dwayne Jones, APRI) Not afraid to go out, but very careful, and will live like that for now
Comment	Community Inclusion	Shout out to Joyce for including me
Comment	In-person Outdoor Events	Outside events are great in large areas
Comment	In-person Outdoor Events	Outdoor events such as festivals, when allowed.
Comment	Community Inclusion	Like to thank Joyce, PHTA, with Alice Griffith Apts, this was very interesting, would like for everyone to stay safe

SF Public Housing Tenants Association – Specific Feedback Overview

Type: Co-hosted Meeting | Thursday, May 6, 2021

TYPE	CATEGORY	COMMUNITY FEEDBACK
Comment	In-person Outdoor Events	Wouldn't mind a tour outdoors, not long, short meeting to see some of the stuff that's going on, we see these slides, but we need to get outside so we can see what's going on
Comment	In-person Outdoor Events	<p>We want the young people perspective as well, and young parents and people that are working on the ground, grass roots, Neola, Kim</p> <p>We did a tour of the sewer treatment, but we should do a tour, want to give Kim and Neola and opportunity to close this out</p>
Comment	In-person Outdoor Events	<ul style="list-style-type: none"> - Interesting to talk about what is happening and what is going to be going on in the future that will come in and destroy parts of the city and try to work on it - Do believe we should go out and tour, map is hard to look at, to me need tangible, looking and feeling and touching, that's what I do and what I would like to do to know what you're talking about - Wouldn't mind an outdoor tour, with masks, being safe, I'm vaccinated, and hope other people will be vaccinated
Comment	Community Inclusion	<ul style="list-style-type: none"> - Thank you for including the community - We sit on so many different boards than the one that is hosted, the info gets engrained - Lets schedule this summer while the weather is nice to go out and look at the site

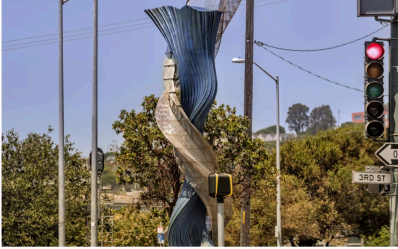
COMMUNITY MEETING #4 SCREENSHOTS

Screenshots of Attendees

Zoom Meeting

Recording...

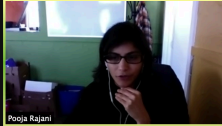
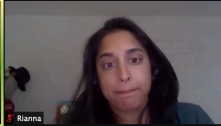
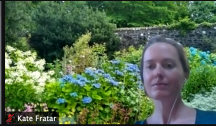




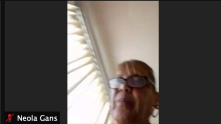
WE WANT TO HEAR FROM YOU!
Let's Pause for Questions



- What questions do you have about the Waterfront Resilience Program?

San Francisco Planning

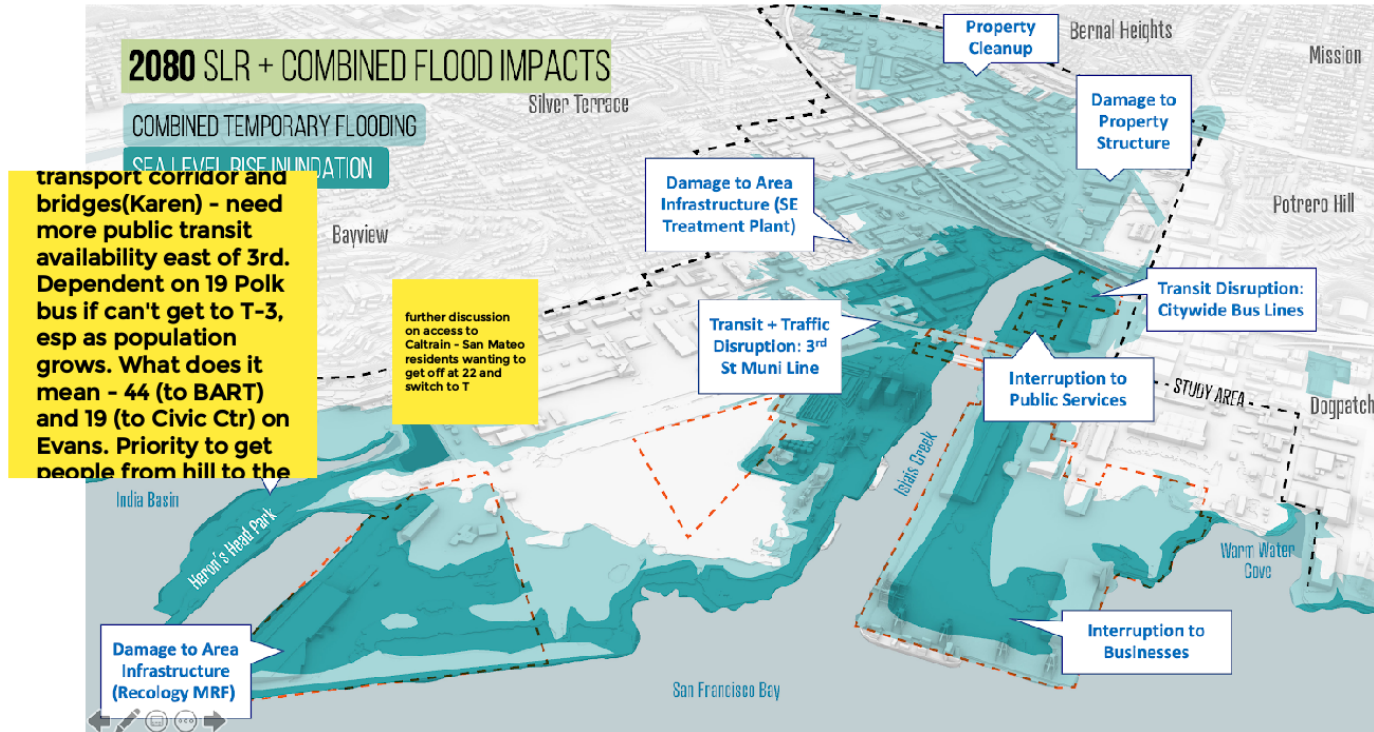
9

 Pooja Rajani	 Rianna	 Kate Fratar
 Kari Kilstrom	 Luiz Barata	 Elisha Rochell
Brad Benson	Edward Hatter	Elizabeth Jones
 Kimberley Hill-Brown	 Neola Gans	Shelly Leonard

Circle Back Comments

Screenshots of Public Comments | Tuesday, May 18, 2021

GROUP 1: Do you have any other concerns about flood protection that aren't addressed?



Circle Back Comments

Screenshots of Public Comments | Tuesday, May 18, 2021

Katherine -- concern about too many hard edges, more nature -- can we protect jobs but transition more to nature that could help, worry we are doing more of the same things that got us into this situation to begin with

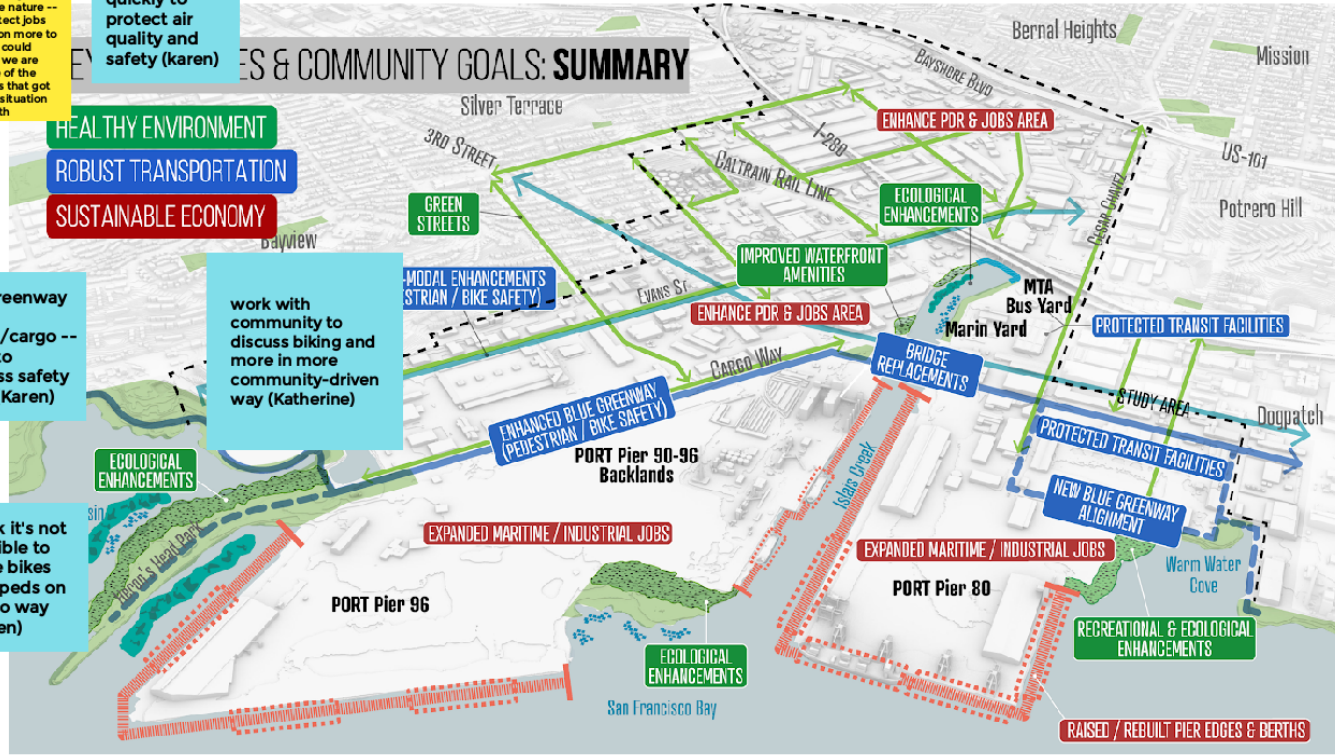
trucks need to get in an out quickly to protect air quality and safety (karen)

bluegreenway with trucks/cargo -- need to address safety issue (Karen)

work with community to discuss biking and more in more community-driven way (Katherine)

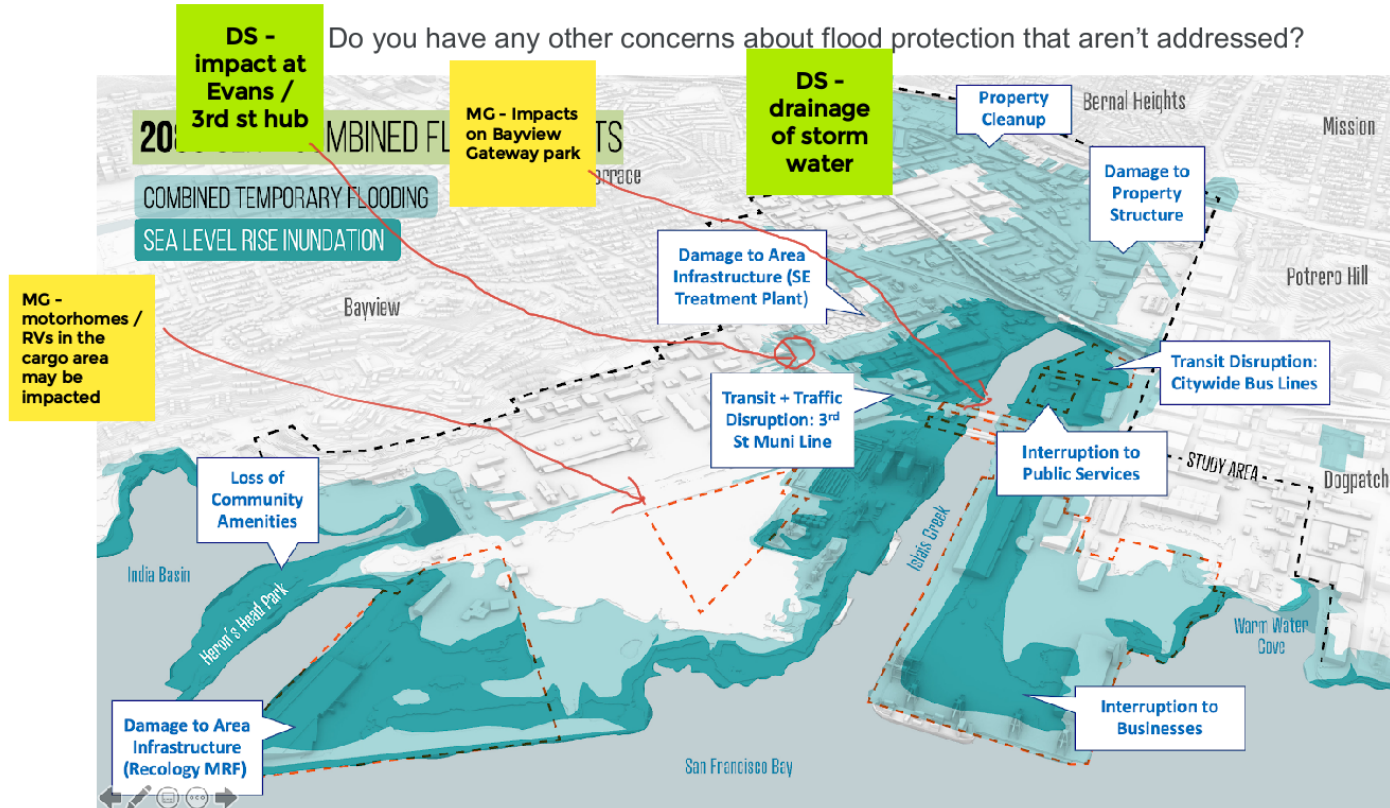
think it's not feasible to have bikes and peds on cargo way (Karen)

Question 1: What potential community benefits or amenities feel most exciting to you?



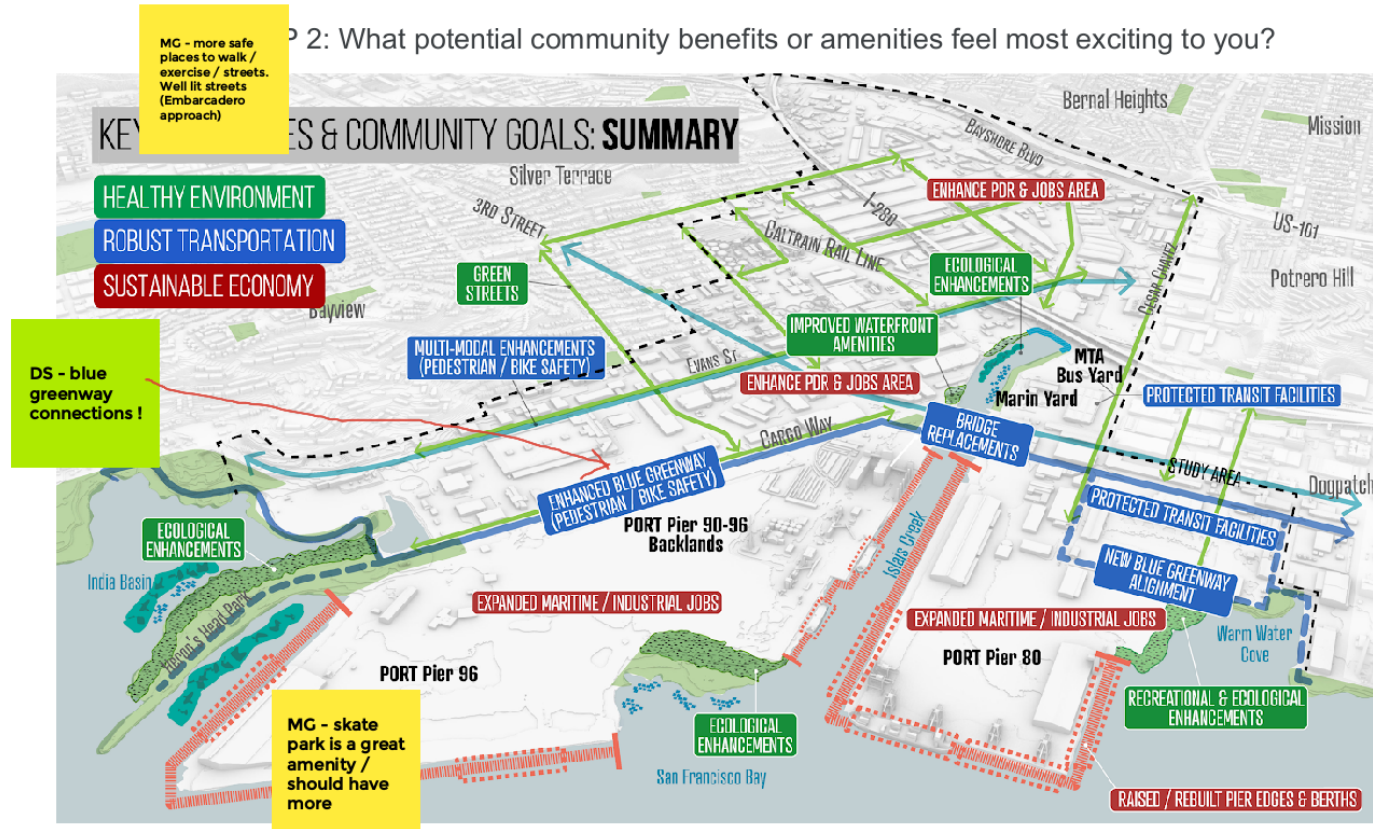
Circle Back Comments

Screenshots of Public Comments | Tuesday, May 18, 2021



Circle Back Comments

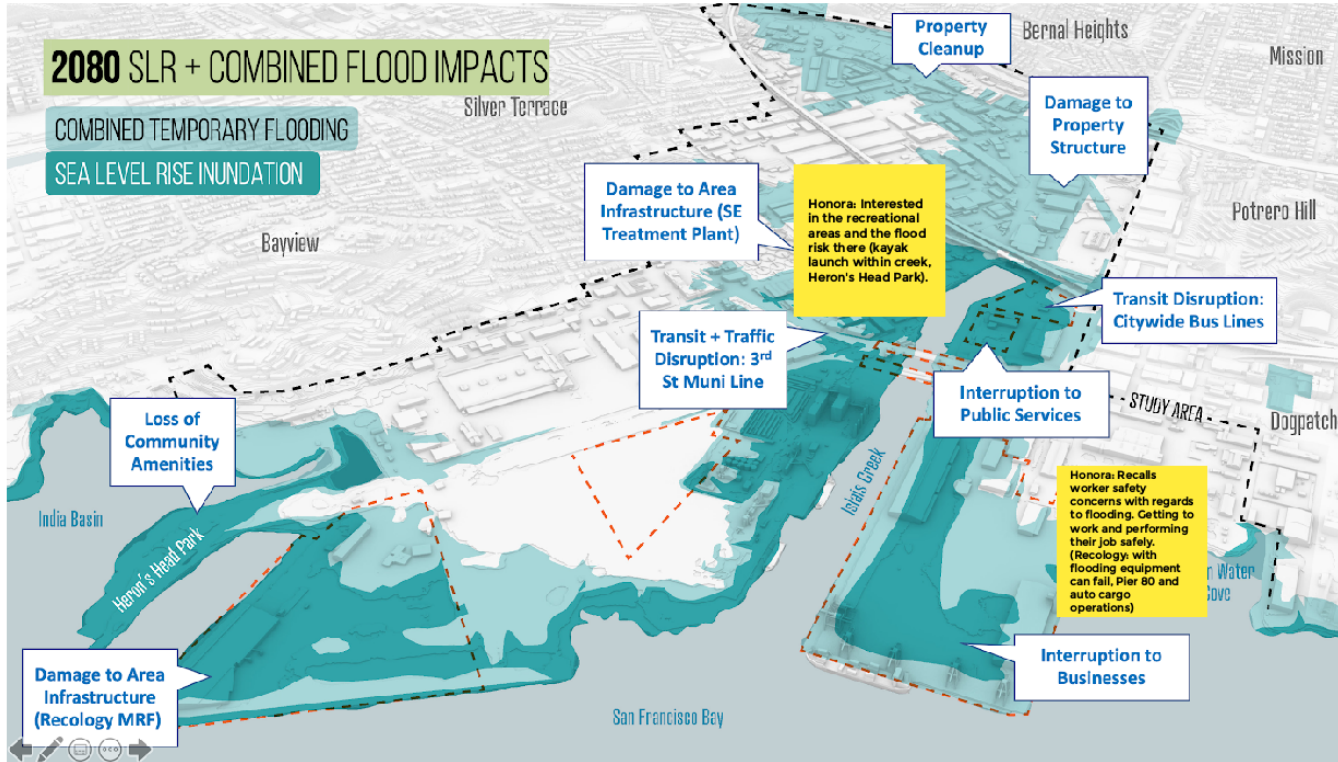
Screenshots of Public Comments | Tuesday, May 18, 2021



Circle Back Comments

Screenshots of Public Comments | Tuesday, May 18, 2021

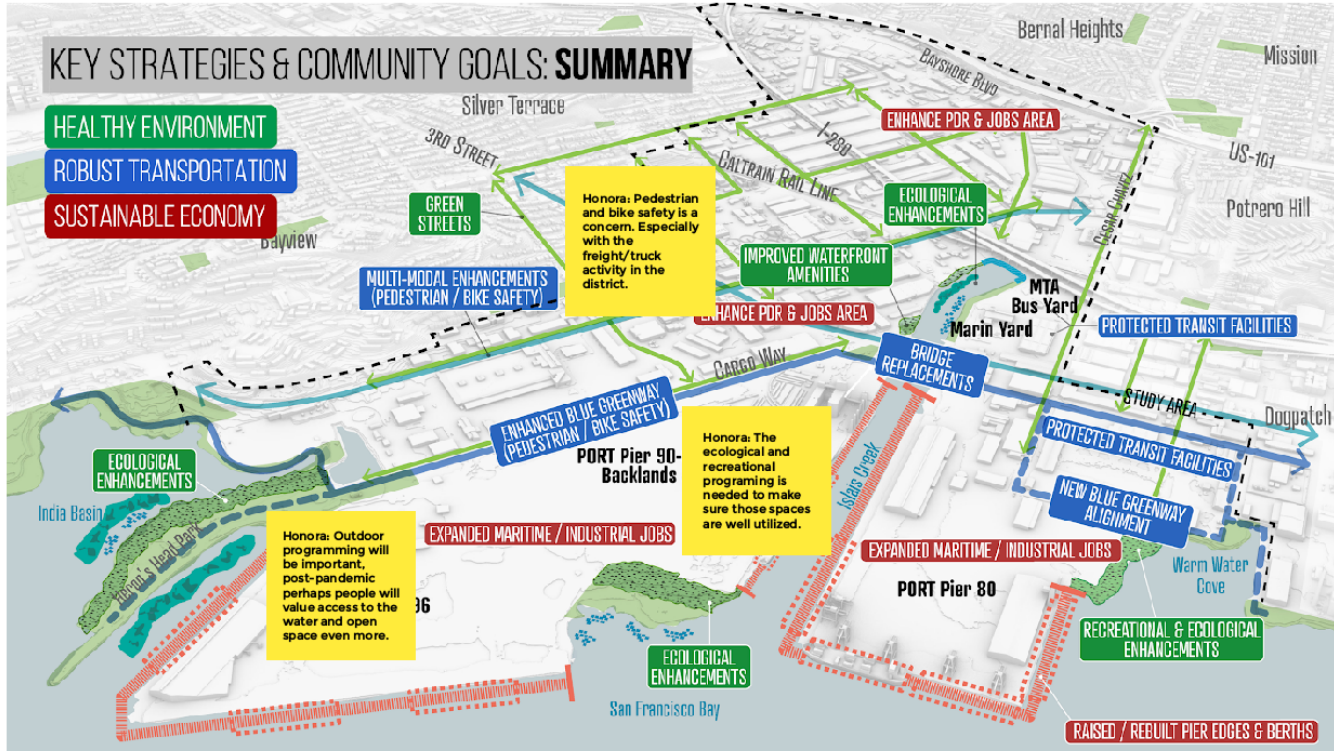
GROUP 3: Do you have any other concerns about flood protection that aren't addressed?



Circle Back Comments

Screenshots of Public Comments | Tuesday, May 18, 2021

GROUP 3: What potential community benefits or amenities feel most exciting to you?



Circle Back Comments

Screenshots of Public Comments | Tuesday, May 18, 2021

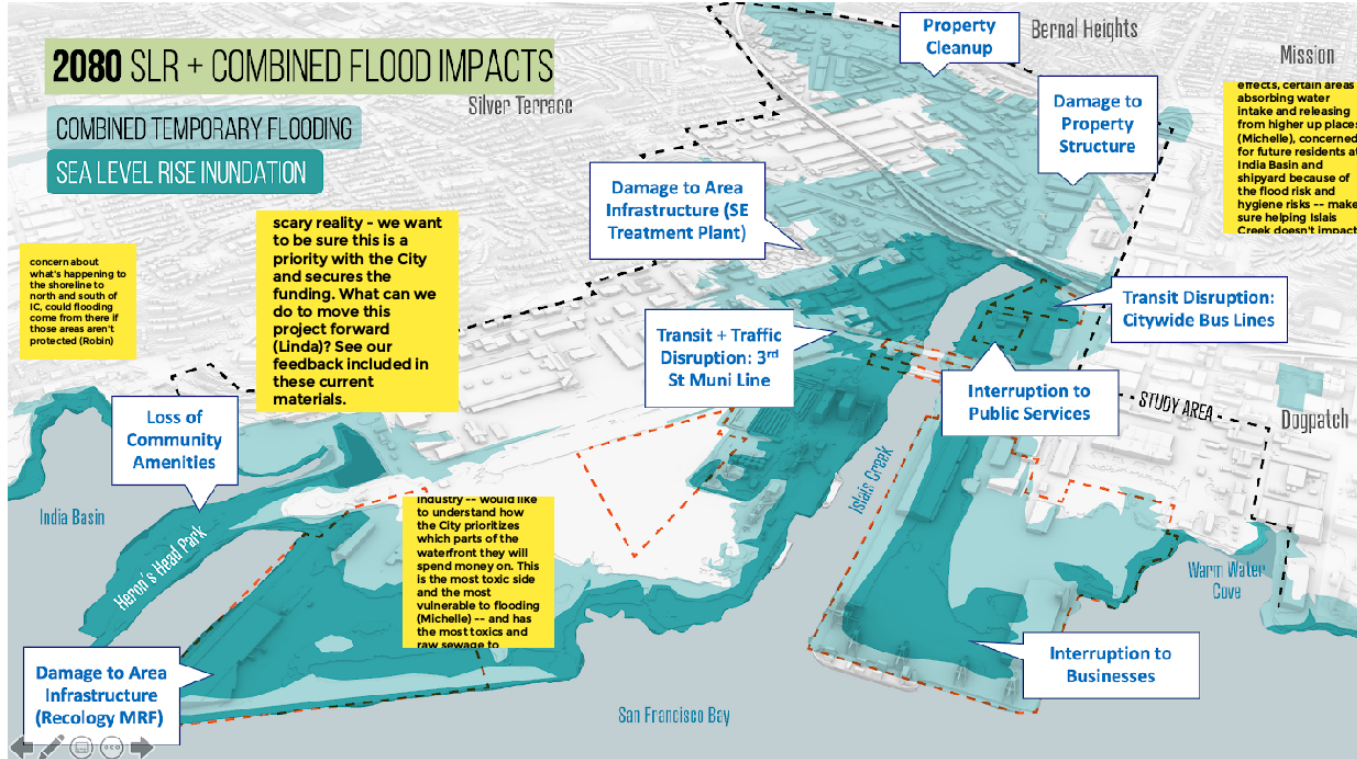
GROUP 3: As the City reopens, what would be the best ways to keep you informed and engaged about next steps?

Honora: Heard about the event through the Shaping SF newsletter. Maybe a way to bring in people is through youth-related organizations, especially now that things are reopening.

Circle Back Comments

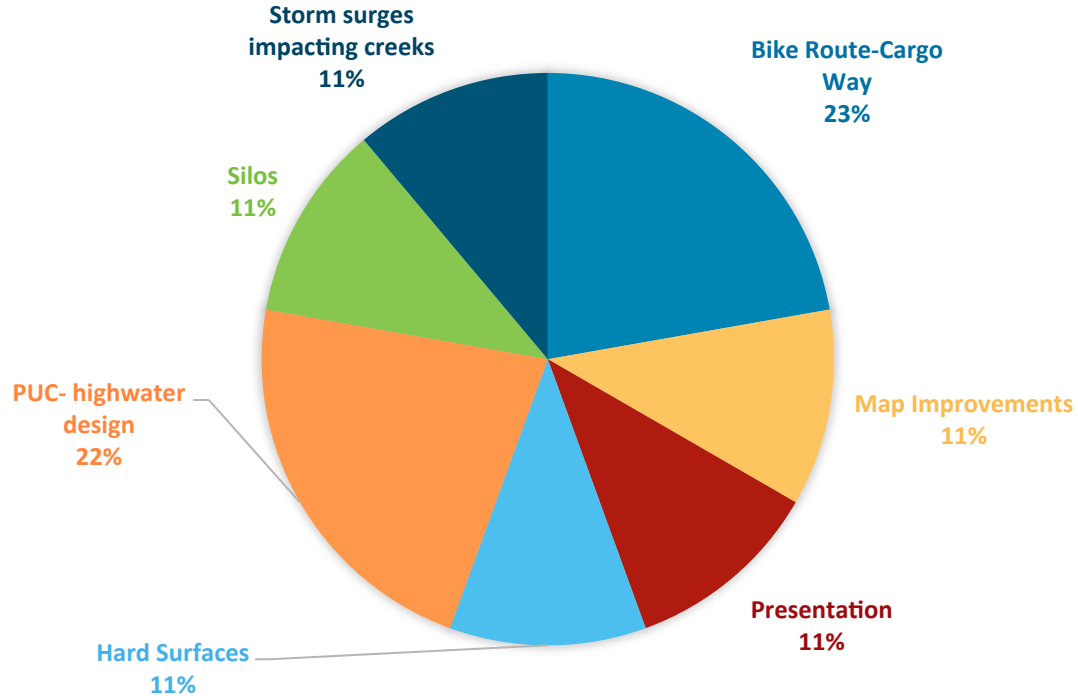
Screenshots of Public Comments | Wednesday, May 19, 2021

GROUP 1: Do you have any other concerns about flood protection that aren't addressed?



Southern Waterfront Advisory Committee – Feedback Overview

Type: Roadshow Presentation | Wednesday, May 26, 2021



Graph 2 - Pie chart categorizing the questions and comments from this meeting

Southern Waterfront Advisory Committee – Specific Feedback Overview

Type: Presentation | Wednesday, May 26, 2021

TYPE	CATEGORY	COMMUNITY FEEDBACK
Comment	Presentation	Slides are intense
Comment	Map Improvements	<ul style="list-style-type: none"> - Have been actively involved with this project since the beginning - There are some slides that I don't remember seeing before - Assets only refer to maritime activity, rather than flooding, let's talk about earthquake, people don't know that, these maps can inform the community what is out there, they are necessary to operating a city, we need to let people know, we support this because we know, there is lots of muni information, do the same with Port assets, show that if it floods, what is impacted
Comment	Bike Route-Cargo Way	<ul style="list-style-type: none"> - Map shows bike routes on Cargo Way, point out lack of safety on Cargo way with the big trucks that have to contend with bicycles, have had alternates, one agency and membership wants to keep it there but aren't looking at it from a safety view, community view, and maritime activity, it's not just residents that use this area, its tenants and people that pass through, - I live south of Islais Creek, people in the neighborhood might be (negatively?) effected and that's never (good?) - Suggest to include the neighborhood and update the slides
Comment	Bike Route-Cargo Way	Think Evans is better, realize it's a losing battle working to keep route safe for both if on Cargo still need to have comment on the design
Question	Hard Surfaces	Identified hard surfaces, what are they made of?

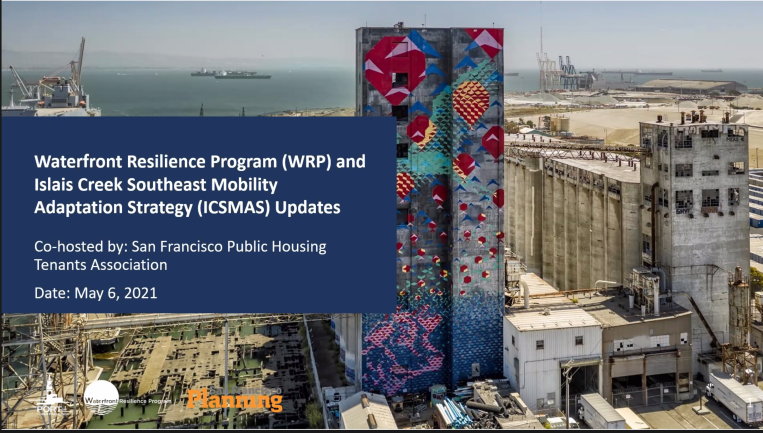
Southern Waterfront Advisory Committee – Specific Feedback Overview

Type: Roadshow Presentation | Wednesday, May 26, 2021

TYPE	CATEGORY	COMMUNITY FEEDBACK
Question	Silos	Plans for the silos? They have been there for 20 years and the artwork is nice, but lets use the space
Question	PUC- highwater design	What is the Port implementing now for high water that the PUC is implementing?
Question	PUC- highwater design	The SSIP is a multibillion-dollar project and to still have high water concerns is disastrous. What plans do you have for securing this site for highwater?
Question	Storm surges impacting creeks	Impact of minor storm surges, when it moves into the creek, it is amplified. On valuable entities. Are the engineers studying this, ex. Netherlands, cost and benefit?

WE HOPE TO SEE YOU AT A FUTURE COMMUNITY MEETING!

Recording



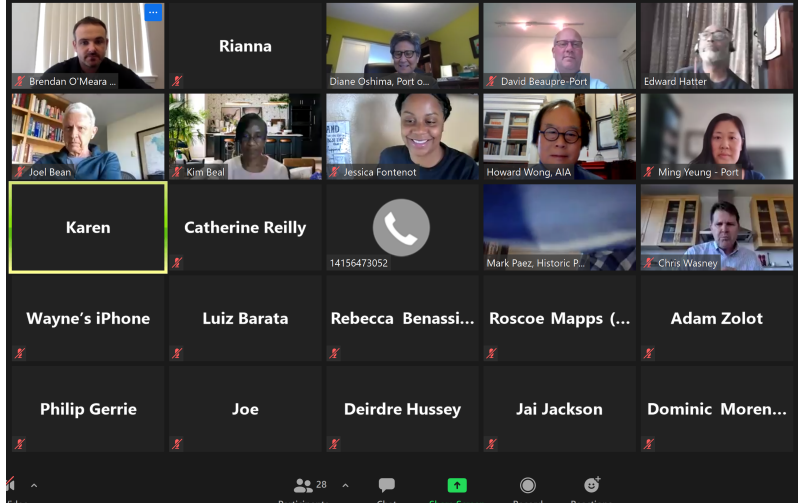
Waterfront Resilience Program (WRP) and Islais Creek Southeast Mobility Adaptation Strategy (ICSMAS) Updates

Co-hosted by: San Francisco Public Housing Tenants Association
Date: May 6, 2021

Planning

Participants in the meeting:

- iPhonejoycearmstr...
- Rianna
- Kimberley Hill-B...
- Edward Hatter
- Pooja Rajani



Participants in the meeting:

- Brendan O'Meara ...
- Rianna
- Diane Oshima, Port ...
- David Beaupre-Port
- Edward Hatter
- Joel Bean
- Kim Beal
- Jessica Fontenot
- Howard Wong, AIA
- Ming Yeung - Port
- Karen
- Catherine Reilly
- 14156473052
- Mark Paez, Historic P...
- Chris Wasney
- Wayne's iPhone
- Luiz Barata
- Rebecca Benassi...
- Roscoe Mapps (...)
- Adam Zolot
- Philip Gerrie
- Joe
- Deirdre Hussey
- Jai Jackson
- Dominic Moren...

Meeting controls: Video, Participants (28), Chat, Share Screen, Record, Reactions