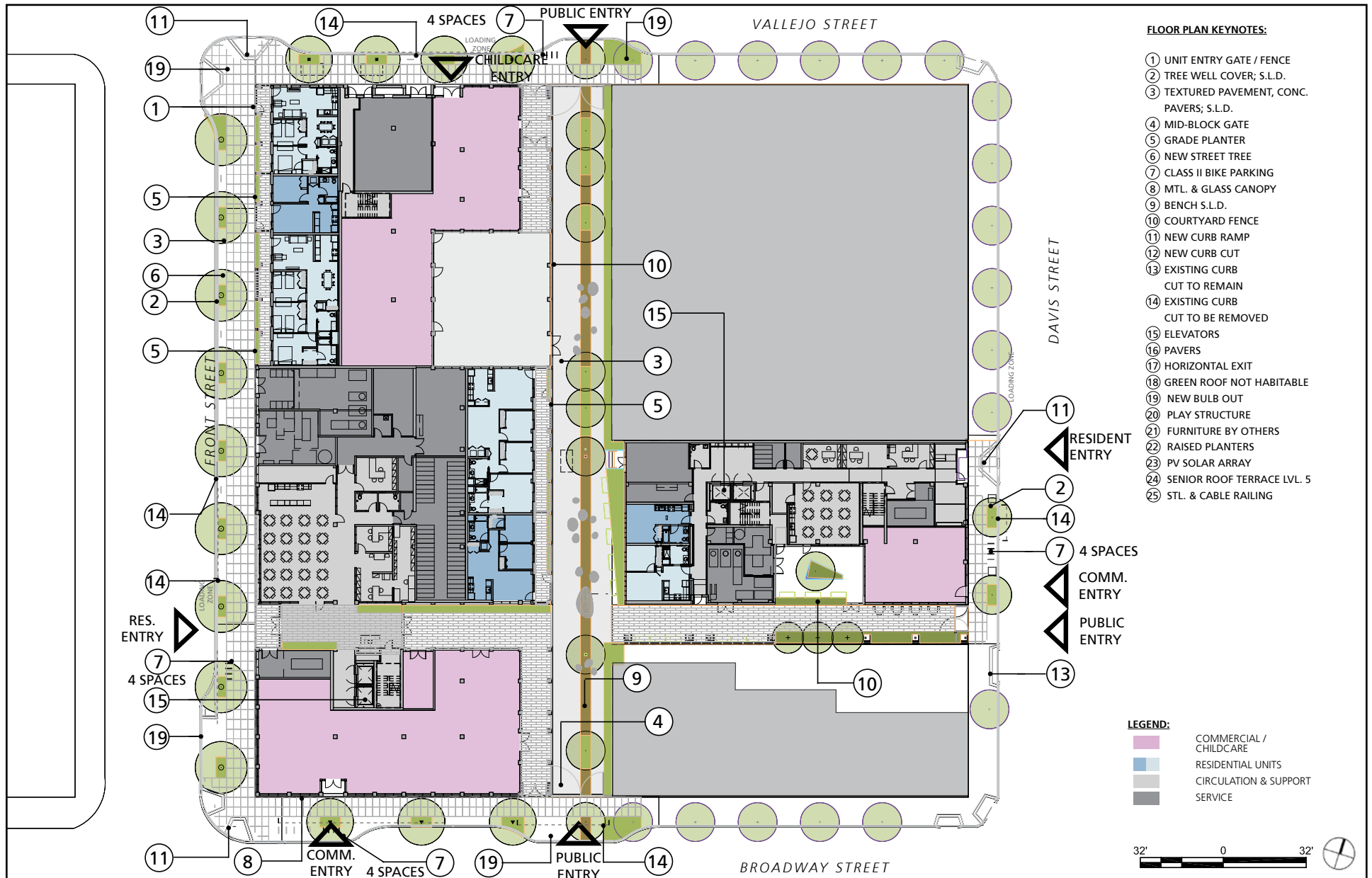


Source: The John Stewart Company, Bridge Housing, Leddy Maytum Stacy Architects, February 26th, 2018.

## 88 BROADWAY & 735 DAVIS STREET PROJECT INITIAL STUDY

Case No. 2016-007850ENV

FIGURE 2  
Proposed Site Plan



Source: The John Stewart Company, Bridge Housing, Leddy Maytum Stacy Architects, February 26th, 2018.

## 88 BROADWAY & 735 DAVIS STREET PROJECT INITIAL STUDY

Case No. 2016-007850ENV

FIGURE 3  
Proposed Level 1 (Ground Floor) Plan



Source: The John Stewart Company, Bridge Housing, Leddy Maytum Stacy Architects, February 26th, 2018.

## 88 BROADWAY & 735 DAVIS STREET PROJECT INITIAL STUDY

Case No. 2016-007850ENV

FIGURE 4  
Proposed Level 2 Plan



Source: The John Stewart Company, Bridge Housing, Leddy Maytum Stacy Architects, February 26th, 2018.

## 88 BROADWAY & 735 DAVIS STREET PROJECT INITIAL STUDY

Case No. 2016-007850ENV

FIGURE 5  
**Proposed Level 3 Plan**



Source: The John Stewart Company, Bridge Housing, Leddy Maytum Stacy Architects, February 26th, 2018.

## 88 BROADWAY & 735 DAVIS STREET PROJECT INITIAL STUDY

Case No. 2016-007850ENV

FIGURE 6  
**Proposed Level 4 Plan**



Source: The John Stewart Company, Bridge Housing, Leddy Maytum Stacy Architects, February 26th, 2018.

## 88 BROADWAY & 735 DAVIS STREET PROJECT INITIAL STUDY

Case No. 2016-007850ENV

FIGURE 7  
**Proposed Level 5 Plan**

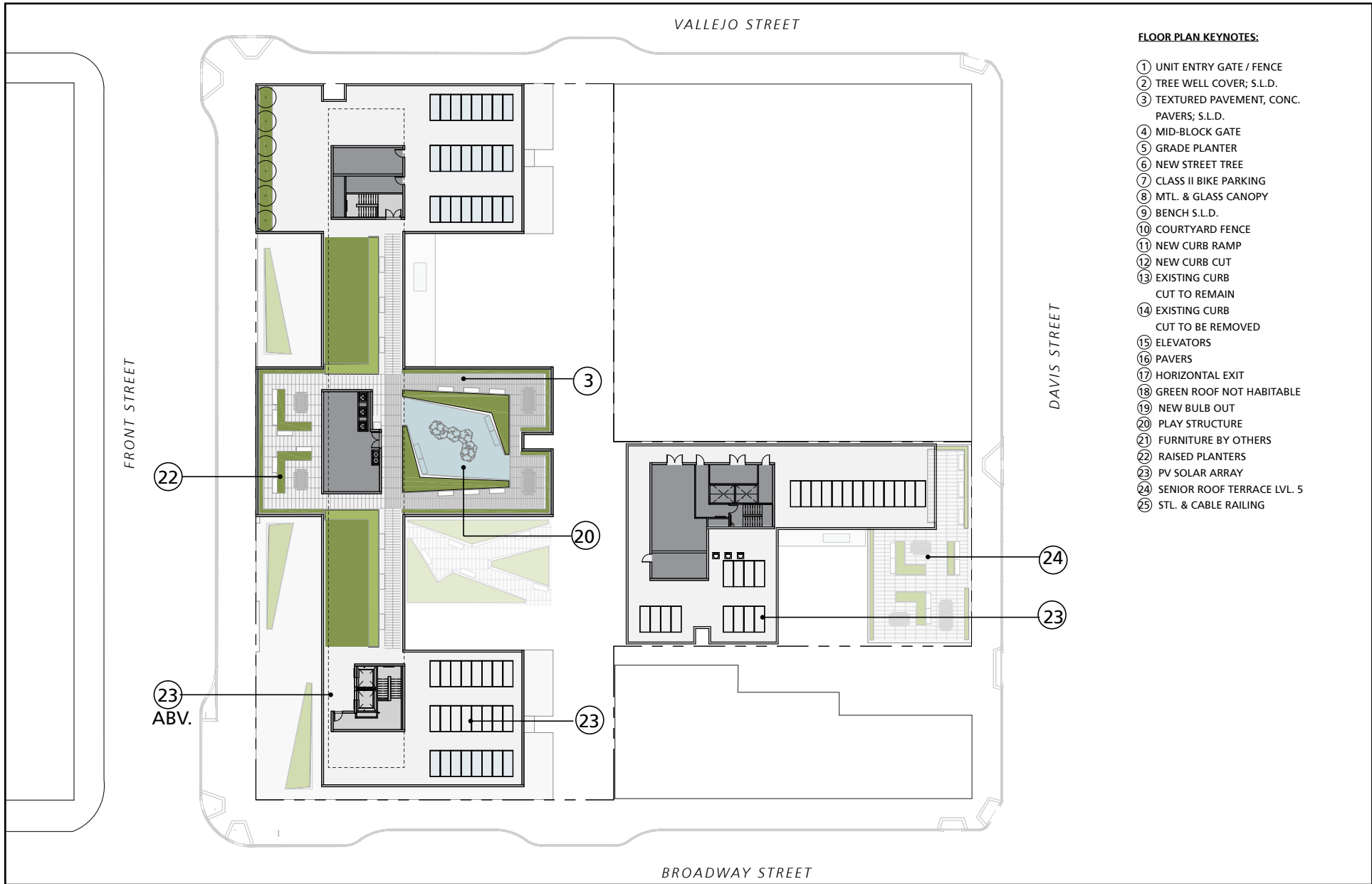


Source: The John Stewart Company, Bridge Housing, Leddy Maytum Stacy Architects, February 26th, 2018.

## 88 BROADWAY & 735 DAVIS STREET PROJECT INITIAL STUDY

Case No. 2016-007850ENV

FIGURE 8  
**Proposed Level 6 Plan**



- FLOOR PLAN KEYNOTES:**
- ① UNIT ENTRY GATE / FENCE
  - ② TREE WELL COVER; S.L.D.
  - ③ TEXTURED PAVEMENT, CONC. PAVERS; S.L.D.
  - ④ MID-BLOCK GATE
  - ⑤ GRADE PLANTER
  - ⑥ NEW STREET TREE
  - ⑦ CLASS II BIKE PARKING
  - ⑧ MTL. & GLASS CANOPY
  - ⑨ BENCH S.L.D.
  - ⑩ COURTYARD FENCE
  - ⑪ NEW CURB RAMP
  - ⑫ NEW CURB CUT
  - ⑬ EXISTING CURB CUT TO REMAIN
  - ⑭ EXISTING CURB CUT TO BE REMOVED
  - ⑮ ELEVATORS
  - ⑯ PAVERS
  - ⑰ HORIZONTAL EXIT
  - ⑱ GREEN ROOF NOT HABITABLE
  - ⑲ NEW BULB OUT
  - ⑳ PLAY STRUCTURE
  - ㉑ FURNITURE BY OTHERS
  - ㉒ RAISED PLANTERS
  - ㉓ PV SOLAR ARRAY
  - ㉔ SENIOR ROOF TERRACE LVL. 5
  - ㉕ STL. & CABLE RAILING

Source: The John Stewart Company, Bridge Housing, Leddy Maytum Stacy Architects, February 26th, 2018.

**88 BROADWAY & 735 DAVIS STREET PROJECT INITIAL STUDY**

Case No. 2016-007850ENV

FIGURE 9  
**Proposed Roof Plan**





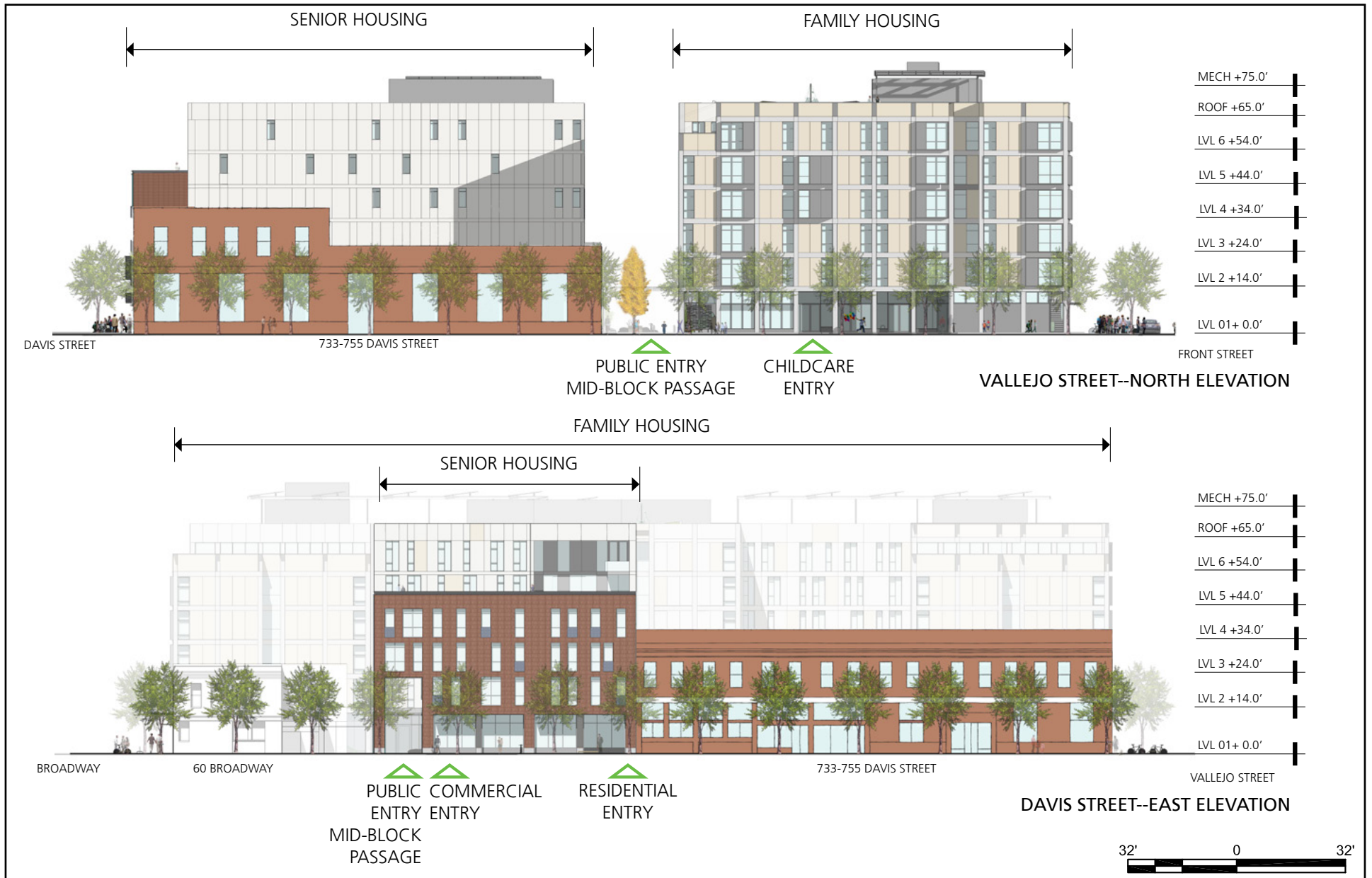
Source: The John Stewart Company, Bridge Housing, Leddy Maytum Stacy Architects, February 26th, 2018.

## 88 BROADWAY & 735 DAVIS STREET PROJECT INITIAL STUDY

Case No. 2016-007850ENV

FIGURE 10

### Proposed South and West Elevations



Source: The John Stewart Company, Bridge Housing, Leddy Maytum Stacy Architects, February 26th, 2018.

## 88 BROADWAY & 735 DAVIS STREET PROJECT INITIAL STUDY

Case No. 2016-007850ENV

FIGURE 11

Proposed North and East Elevations



Source: The John Stewart Company, Bridge Housing, Leddy Maytum Stacy Architects, February 26th, 2018.

## 88 BROADWAY & 735 DAVIS STREET PROJECT INITIAL STUDY

Case No. 2016-007850ENV

FIGURE 12

**Perspective A: Davis Street/Broadway Intersection**



Source: The John Stewart Company, Bridge Housing, Leddy Maytum Stacy Architects, February 26th, 2018.

## 88 BROADWAY & 735 DAVIS STREET PROJECT INITIAL STUDY

Case No. 2016-007850ENV

FIGURE 13

**Perspective B: Front Street/Broadway Intersection**



Source: The John Stewart Company, Bridge Housing, Leddy Maytum Stacy Architects, February 26th, 2018.

## 88 BROADWAY & 735 DAVIS STREET PROJECT INITIAL STUDY

Case No. 2016-007850ENV

FIGURE 14

Perspective C: Front Street/Vallejo Street Intersection



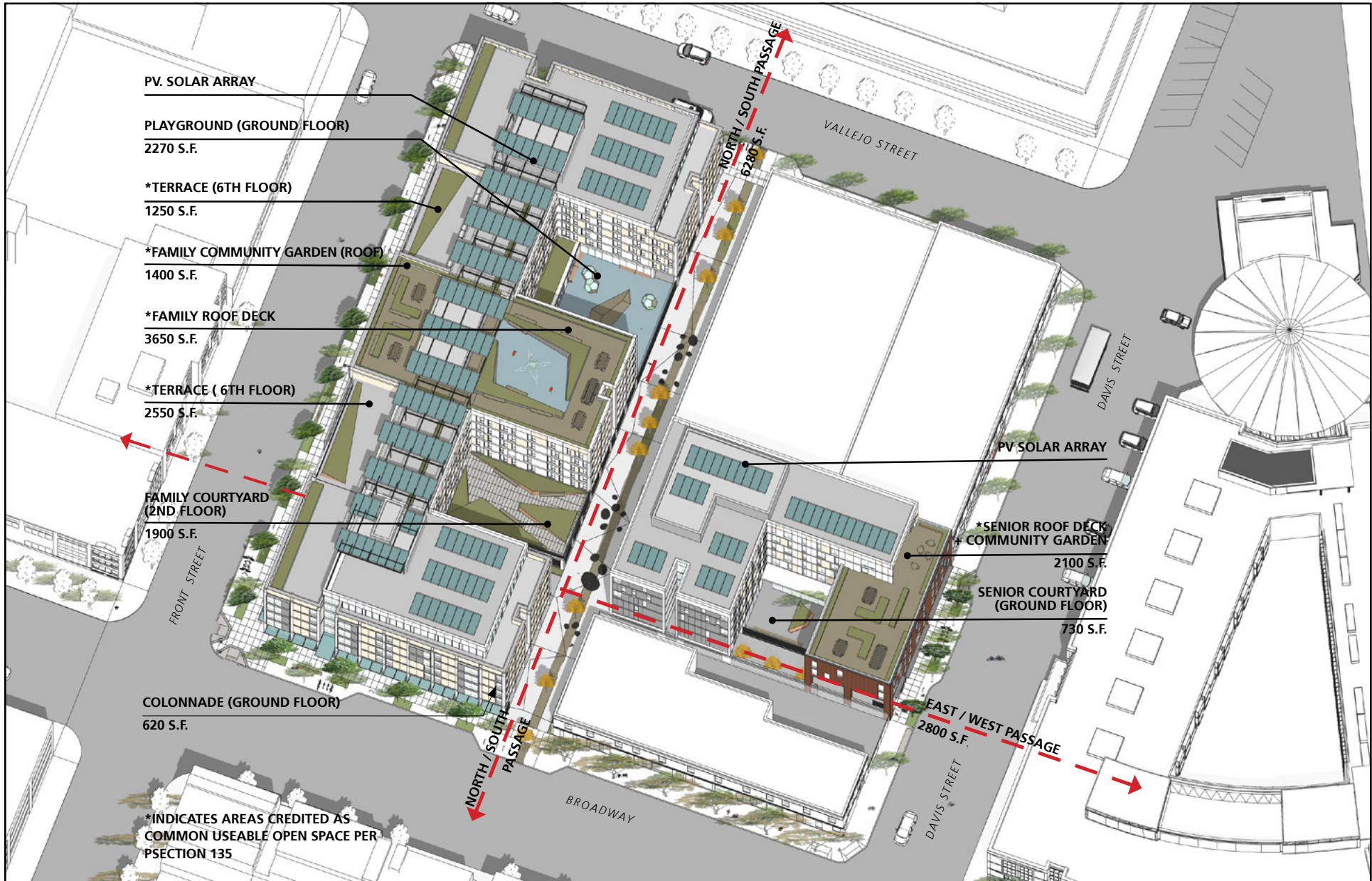
Source: The John Stewart Company, Bridge Housing, Leddy Maytum Stacy Architects, February 26th, 2018.

## 88 BROADWAY & 735 DAVIS STREET PROJECT INITIAL STUDY

Case No. 2016-007850ENV

FIGURE 15

**Perspective D: Vallejo Street/Davis Street Intersection**



Source: The John Stewart Company, Bridge Housing, Leddy Maytum Stacy Architects, February 26th, 2018.

## 88 BROADWAY & 735 DAVIS STREET PROJECT INITIAL STUDY

Case No. 2016-007850ENV

FIGURE 16  
**Open Space**