

PG&E Beach Street Offshore Sediment Remediation Project Update

Fisherman's Wharf Advisory Committee (FWAC)

March 4, 2026



Kathryn Purcell, Port of San Francisco Project Manager
Luke W.-Vernagallo, PG&E Project Manager

Agenda

- 1** Remediation Project Overview and Work Completed in 2025

- 2** Work Overview for 2026

- 3** Project Controls & Environmental Protections

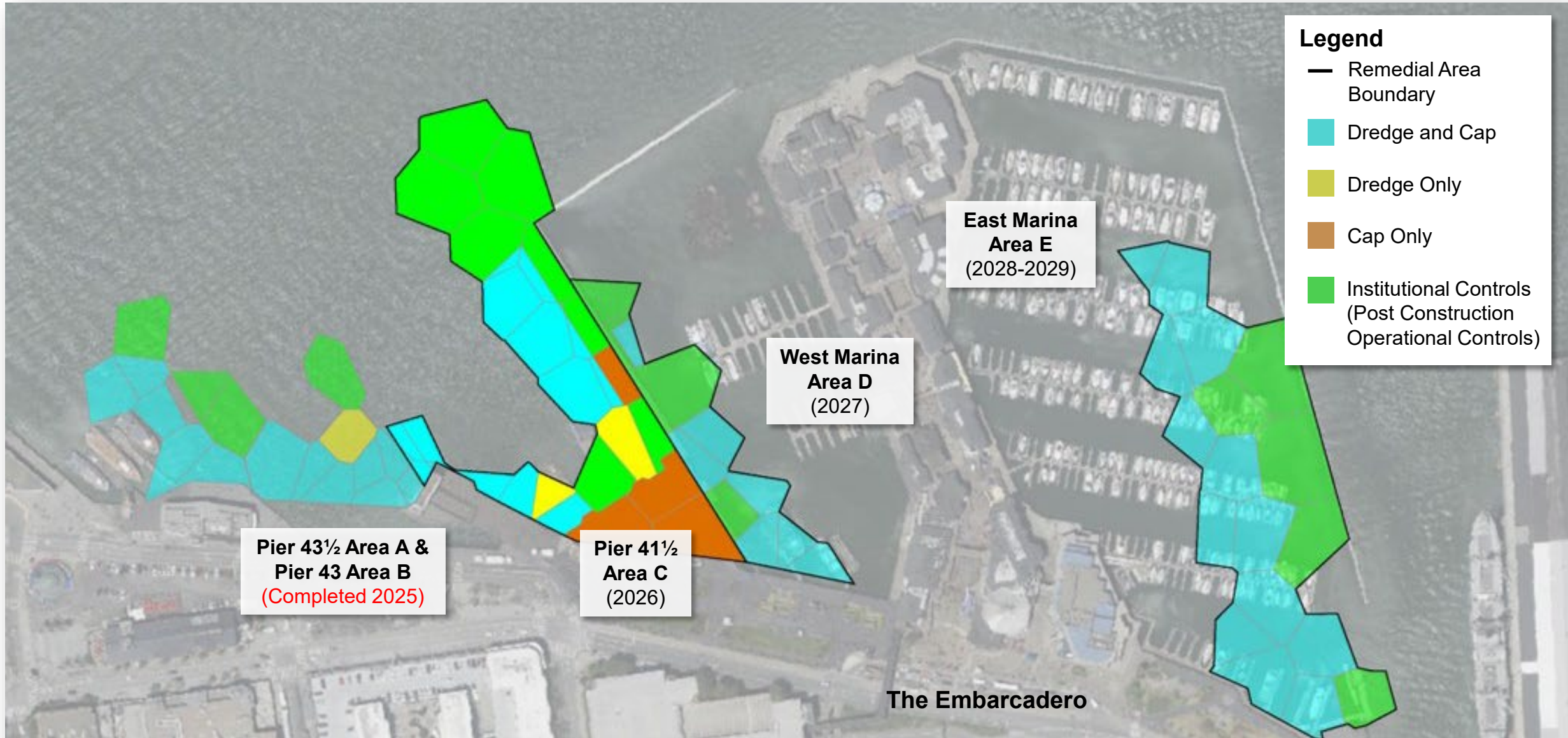
- 4** Outreach & Engagement

Beach Street Remediation Project Overview

- The project addresses environmental impacts from the historic operations of the former Beach Street Manufactured Gas Plant (MGP) that operated in the 1900s
- Cleanup involves remediating impacted sediment at five work areas (Areas A-E) from 2025-2030 during the regulatory in-water work window (June-November)
- Cleanup includes dredging and capping of work areas extending from the shoreline to approximately 1,000 feet offshore

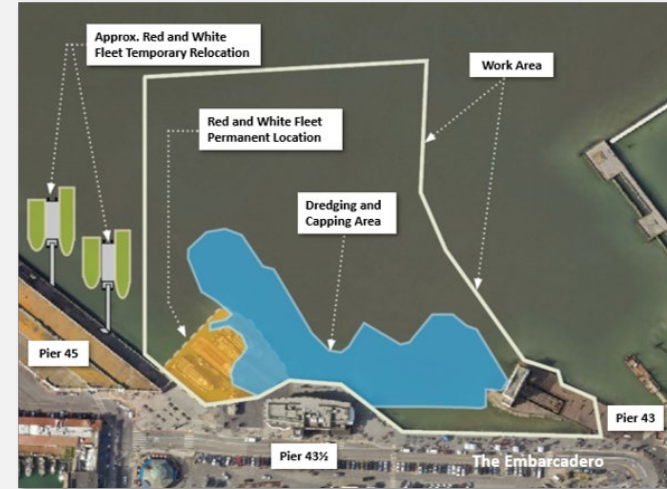


Timeline for Five Offshore Remedial Areas



Remedial Areas A & B - Work Completed in 2025

- Temporary relocation of impacted tenants
- Installation and implementation of environmental protection measures and monitoring devices
- Dredging and marine debris removal
- Sediment transported by barge to PG&E Material Handling Facility at Montezuma for drying and landfill disposal
- Capping
- Installation of slope stability pin piles
- Community engagement
 - Interacted with over 1,000 people at PG&E's staffed kiosk
 - Regular stakeholder email updates



Remedial Areas A & B – Site Restoration and Demobilization



- Removed Turbidity Curtain and Turbidity Curtain Piles and all Marine Equipment from Site

Areas A and B – Tenant Returns in Spring 2026

Tenant Return Update:

- Red and White Fleet working to schedule and complete waterside structures to Pier 43½ beginning April 2026 - pending permit approvals
- SFMNPA targeting return of USS Pampanito to Pier 45 SE original berth following Red and White return to Pier 43½



Area C (Pier 41 ½) Work Overview for 2026

Tenant Operational Changes

- Blue and Gold (B&GF) vessel excursions will temporarily operate out of Pier 39 West Marina

Area C1 (under Pier 41½)

- Installation of sand cap
- Installation of scour protection grout filled mattress

Area C2 (offshore Pier 41½)

- Dredge and remove impacted sediment
- Installation of slope stability pin piles
- Installation of sand and rock capping

Work Hours to Meet Dredge Volume

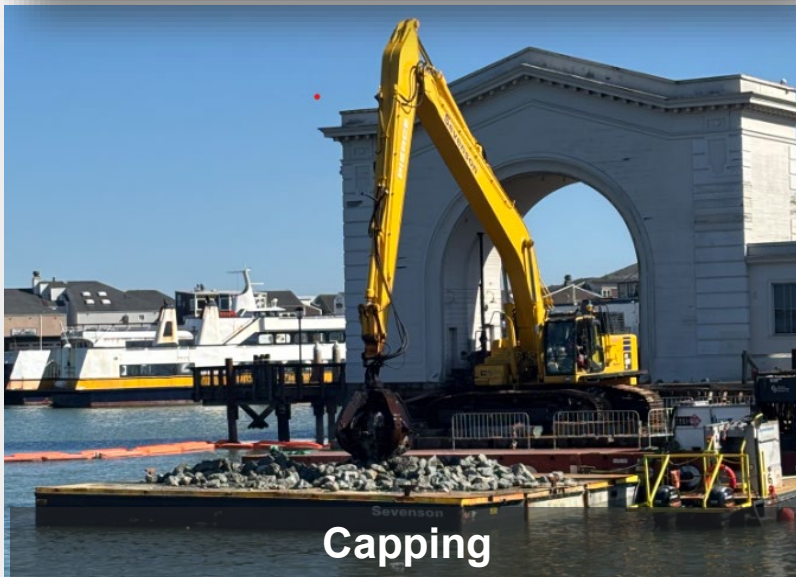
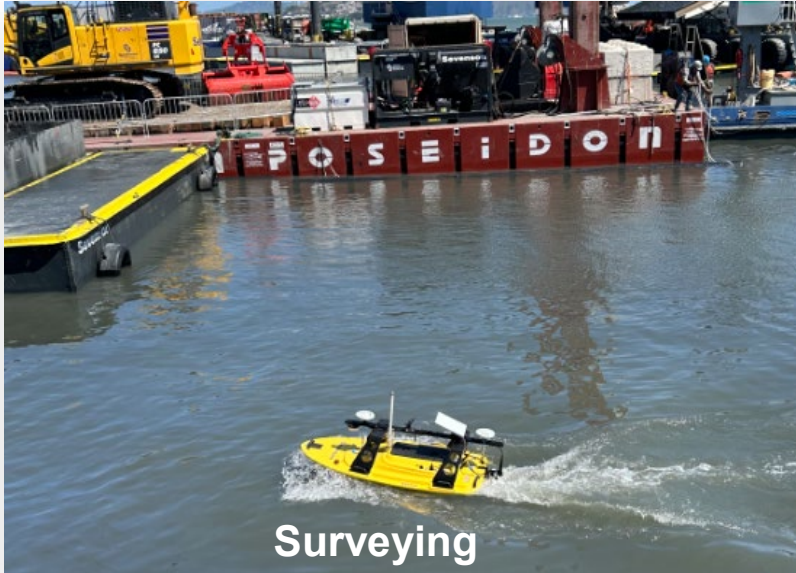
- Early weekday start time (5am-5pm)
- Saturday work, if required due to project delays
- Contingency for night dredging, if needed to complete work during in-water work window



Area C (Pier 41½) – 2026 Construction Scope and Timeline

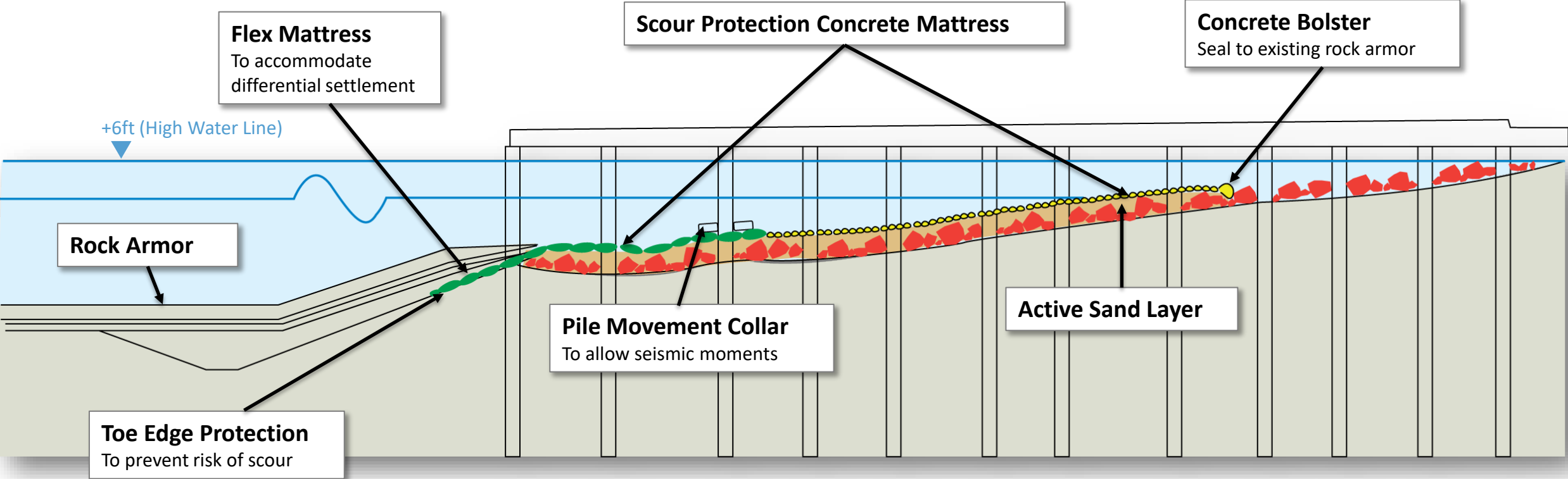
	Mobilization	Initiate In-Water Work	Remediation	B&GF Activities
Approximate Timing	May 2026	Early June 2026	June - November 2026	March - June 2027
Tenant Operational Changes	<ul style="list-style-type: none"> Mobilize to site ~ May 3 B&GF temporarily ceases operations at Pier 41½ Demo B&GF float, gangway and utilities Remove B&GF existing piles 			<ul style="list-style-type: none"> B&GF to reinstall terminal at Pier 41½ and resume vessel and ferry operations
Remediation	<ul style="list-style-type: none"> Baseline air and water quality sampling Equipment staging and mobilization Vibratory install turbidity curtain piles 	<ul style="list-style-type: none"> Mobilize additional marine equipment Install turbidity curtains Begin dredging operations 	<ul style="list-style-type: none"> Install scour protection grout mattress under Pier 41½ Dredging and marine debris removal Placement of cap sand and rock cap materials Install pin piles Demobilize by Nov. 30, 2026 	

Work Activity Examples



Scour Protection Mattresses

High-strength geotextile mattress grouted with concrete for coastal erosion control



Project examples for illustrative purposes:



Remediation Project Controls & Environmental Protection Plans

Remediation work to comply with local, state and federal project permits and workplans

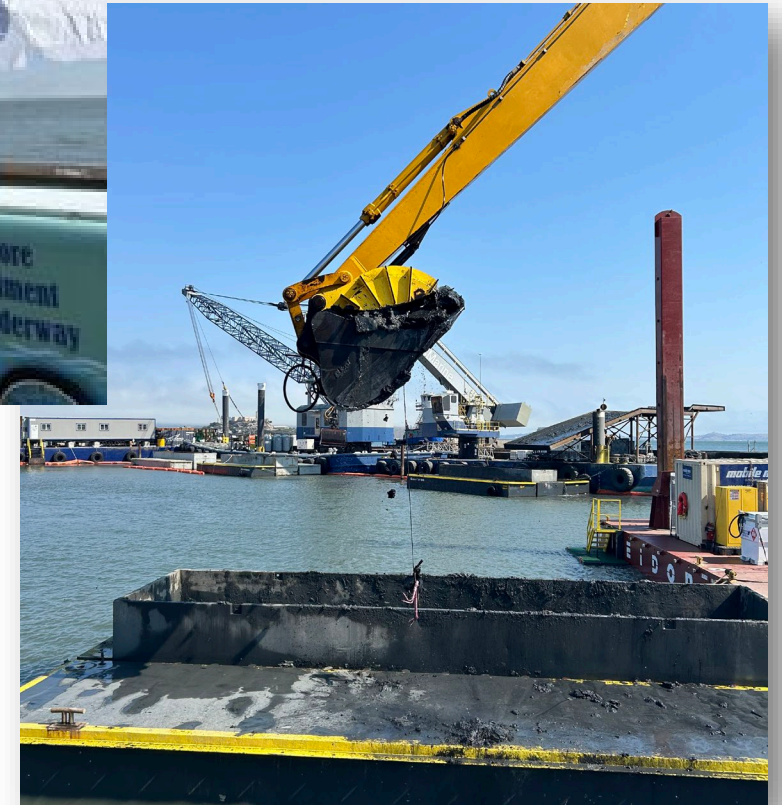
- Community Protection Plan
- Health and Safety Plan
- Dredging and Capping Operations Plan
- Water Quality Monitoring Plan
- Marine Mammal Monitoring Plan
- Underwater Noise Monitoring Plan
- Dust, Vapor and Odor Control Plan
- Community Air Monitoring Plan
- Waste Management and Transportation Plan
- Concrete Mattress Quality Control Plan
- Vibration Monitoring



Project oversight by the Regional Water Board and Port staff includes site inspections to ensure compliance.

Outreach and Engagement

- Project signage
- Information kiosk near work area
- Updates to stakeholder/advisory groups
- Area C and Marine Mammal Protection Fact Sheets
- Door-to-door business outreach
- Email updates to interested stakeholders
- Port project webpage and fact sheet www.sfport.com/beachstreet
- Coordination with Water Board and mailed work notice
- Rapid response to public inquiries to PG&E dedicated phonenumber or email



Questions?