



SFMTA

Embarcadero Connectivity Plan



January 2026

Agenda and Meeting Goal

Meeting Goal: Introduce the project, answer questions about the project, and hear about your transportation priorities

Agenda:

- Introductions
- Background and Context
- Project Overview
- Desired Outcomes
- Timeline
- Upcoming Outreach
- Q&A

What is the Embarcadero Connectivity Plan?



- Long-range waterfront transportation plan
- This plan will:
 - **Address potential transportation impacts** from the Port's future work along the Embarcadero
 - **Envision a future waterfront transportation network** that will benefit generations to come

--- Plan Area Boundary --- Muni Bus Lines --- F Line --- N Line --- T Line --- All Other Muni Metro Lines
--- Embarcadero Waterfront Core Area --- BART --- Caltrain --- Ferry Lines

The Embarcadero Connects us All

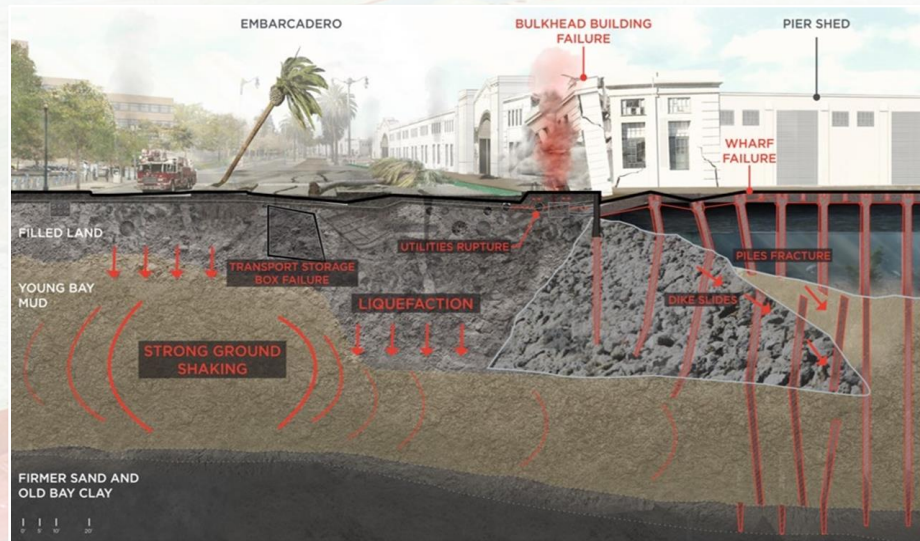


The Embarcadero is at Risk

San Francisco, 1906

The Dual Risks of Earthquake and Sea Level Rise Cannot Be Ignored

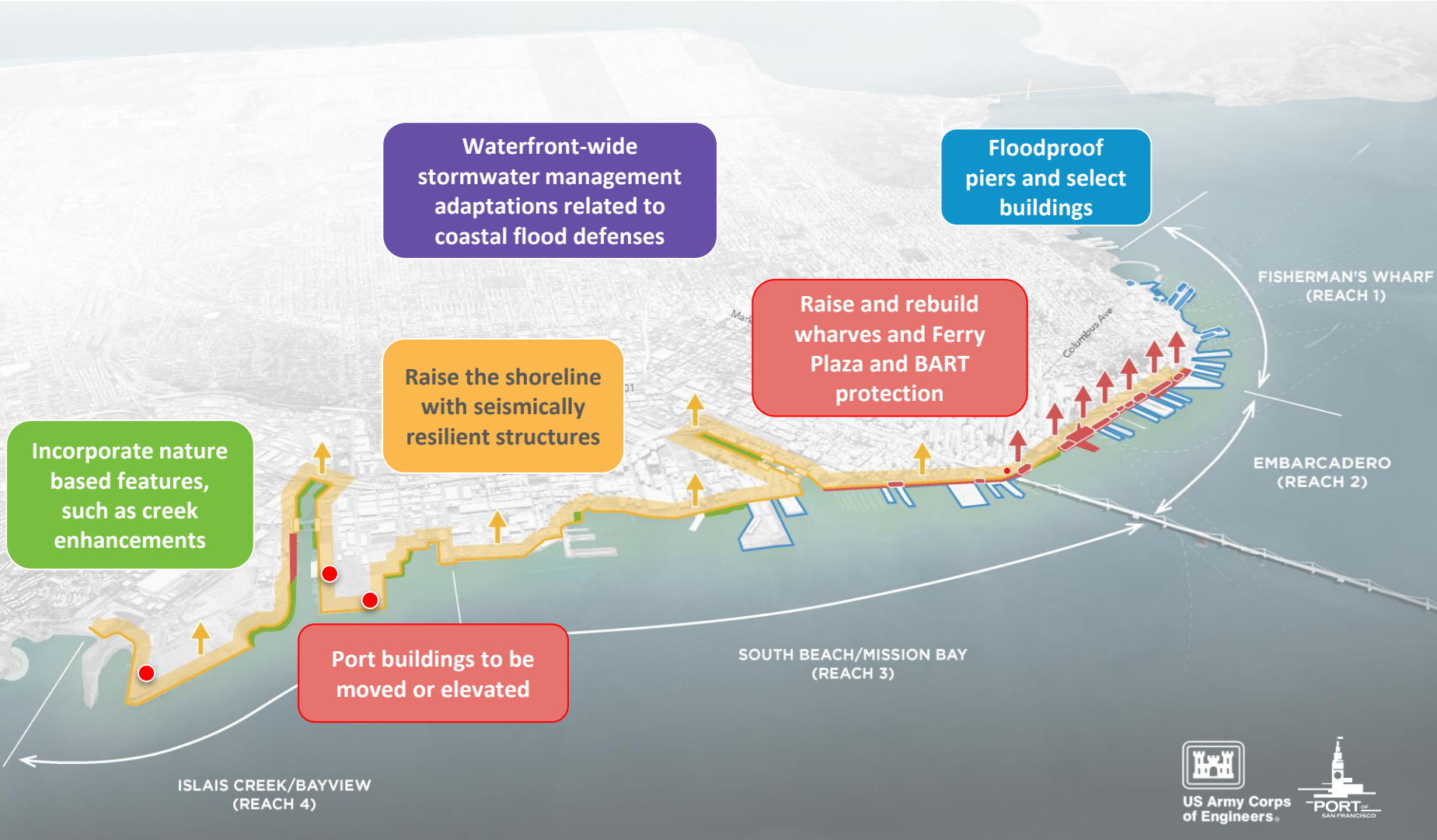
The 150-year-old historic seawall must be replaced



Up to **40,000** people could be at risk on Port property if an earthquake occurs during the day

San Francisco's waterfront faces urgent flood risks **today**

The San Francisco Waterfront Flood Study Draft Plan



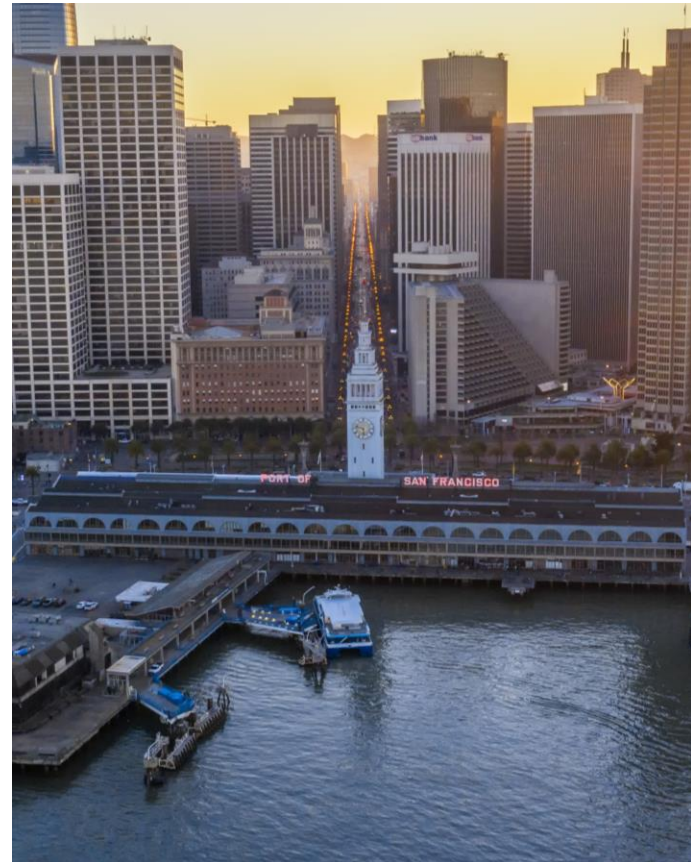
US Army Corps of Engineers



PORT SAN FRANCISCO

The San Francisco Waterfront Flood Study

- San Francisco Waterfront Flood Study
 - Study completion estimated 2026
 - Designed and built in phases over several decades
 - Will not include construction timing & phasing – TBD with community input
- Embarcadero Connectivity Plan – partner plan to inform design of Port's flood defense plan.



The Embarcadero Connectivity Plan is...



- A long-range waterfront transportation plan
- This plan will:
 - **Address potential transportation impacts** from the Port's future work along the Embarcadero
 - **Envision a future waterfront transportation network** that will benefit generations to come



What will be included in this plan?



- - - Plan Area Boundary
- Muni Bus Lines
- F Line
- N Line
- T Line
- All Other Muni Metro Lines
- Embarcadero Waterfront Core Area
- BART
- Caltrain
- Ferry Lines

What will be included in this plan?

- Improvements to the Embarcadero corridor



What will be included in this plan?



- Improvements to the Embarcadero corridor
- Improved connections to & from the waterfront



What will be included in this plan?



- Improvements to the Embarcadero corridor
- Improved connections to & from the waterfront
- Improvements within the adjacent network that help address potential transportation impacts along the Embarcadero

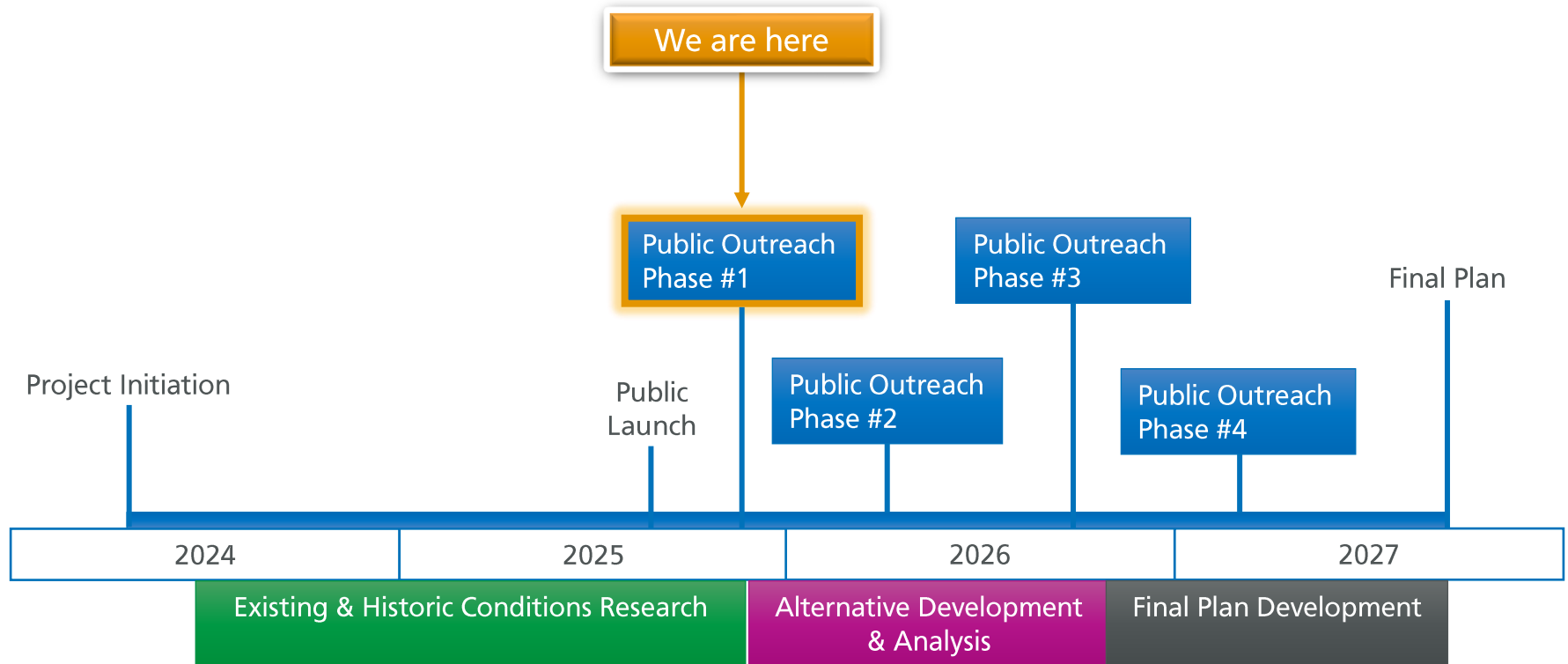
--- Plan Area Boundary --- Muni Bus Lines --- F Line --- N Line --- T Line --- All Other Muni Metro Lines
--- Embarcadero Waterfront Core Area --- BART --- Caltrain --- Ferry Lines

What do we hope to get out of this plan?

- A safer, more accessible, and connected network
- A resilient and sustainable transportation system
- Equitable investments
- An inclusive, community-centered plan



Timeline



Questions & Discussion

- Do you have any questions for us?
- Are there any **mobility challenges/priorities** you would like us to know about in the plan area?



SFMTA

Thank you!

We want to hear your feedback.

Take our [Port Tenant Survey](#) or our [General Phase 1 Outreach Survey](#).

Surveys will be open until January 31, 2026.

Email us at EmbarcaderoConnectivity@SFMTA.com

Or visit SFMTA.com/EmbarcaderoConnectivity to sign up for updates