



# Proposed Central Embarcadero Plan

## Draft (September 2025)

FOR MORE INFORMATION  
visit: [SFMTA.com/Embarcadero](https://sfmta.com/Embarcadero)

CONTACT US  
email: [Embarcadero@SFMTA.com](mailto:Embarcadero@SFMTA.com)

### Project Area Map and Cut Sheet Legend



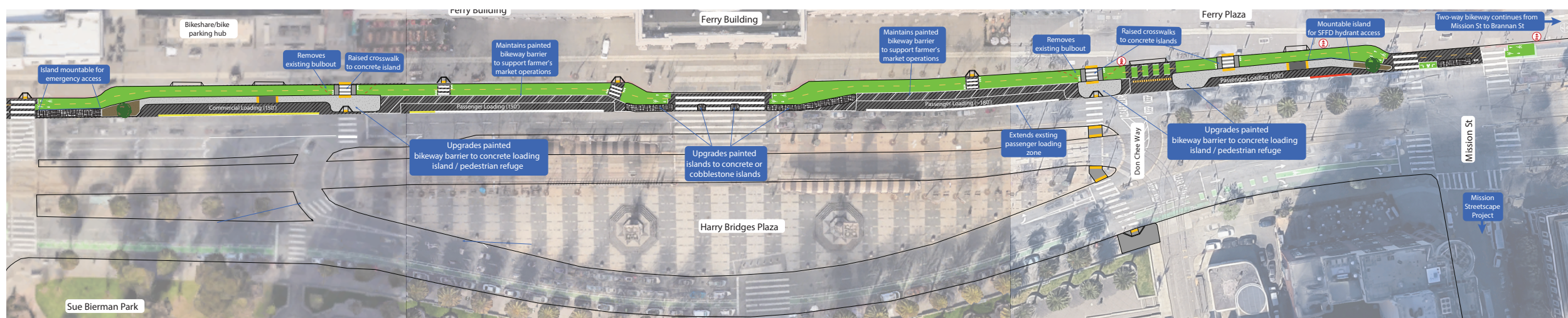
### Project Elements Legend

- Pedestrian-accessible concrete island
- Non-accessible concrete island
- Cobblestone island with new palm tree
- Green-painted bikeway
- Demolition of existing curb

### Sheet 1: Broadway to Washington Street



### Sheet 2: Washington Street to Mission Street







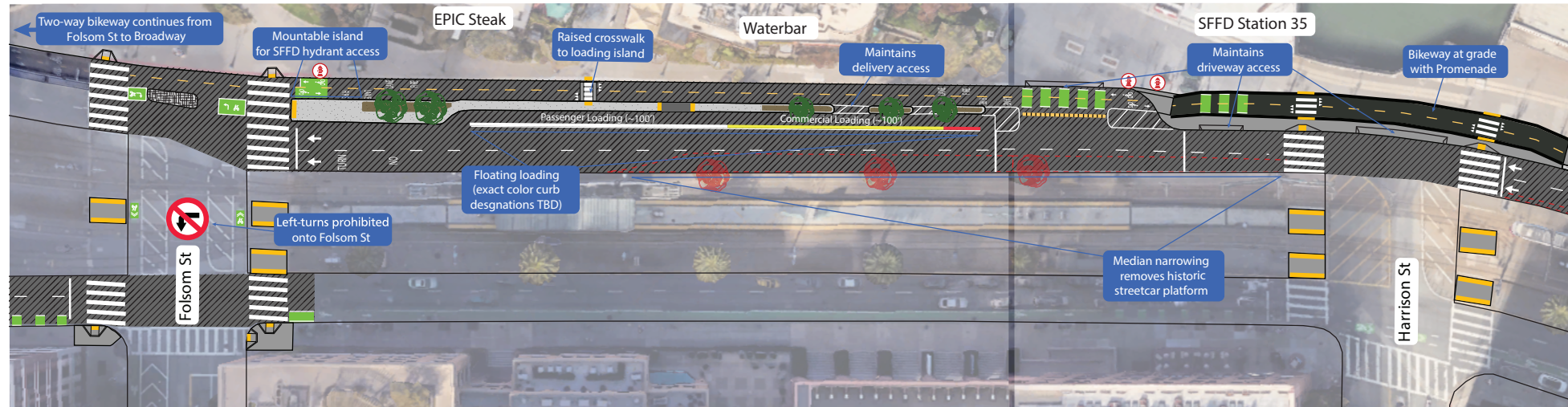
# Proposed Central Embarcadero Plan

## Draft (September 2025)

FOR MORE INFORMATION  
visit: [SFMTA.com/Embarcadero](https://www.sfmta.com/Embarcadero)

CONTACT US  
email: [Embarcadero@SFMTA.com](mailto:Embarcadero@SFMTA.com)

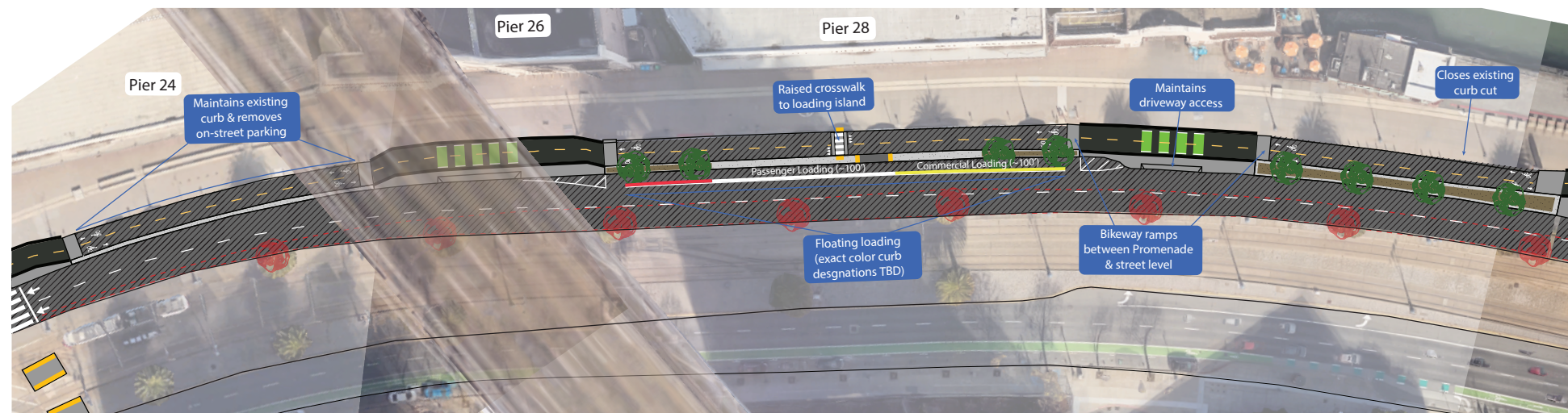
Sheet 3: Rincon Restaurant Zone (Folsom St to Harrison St)



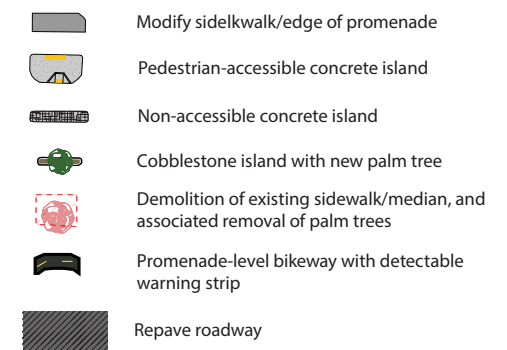
Project Area Map and Cut Sheet Legend



Sheet 4: Piers 24-28 (Between Harrison St & Bryant St)



Project Elements Legend



Sheet 5: Pier 30/32(Bryant St to Brannan St)

